

Appendix H - Noise Monitoring Results

(0700-1900 hrs on Normal Weekdays)

Location CKL1 - Flat 121 Cha Kwo Ling Village							
Date	Time	Weather	Unit: dB (A) (30-min)				
			Measured Noise Level			Baseline Level	Construction Noise Level
			L _{eq}	L ₁₀	L ₉₀	L _{eq}	L _{eq}
4-Jan-22	13:30	Fine	69.7	73.2	59.9	72.4	69.7 Measured ≤ Baseline
10-Jan-22	10:30	Sunny	68.8	72.7	57.5	72.4	68.8 Measured ≤ Baseline
20-Jan-22	9:30	Sunny	72.4	76.1	64.7	72.4	72.4 Measured ≤ Baseline
26-Jan-22	15:15	Fine	71.3	74.1	61.7	72.4	71.3 Measured ≤ Baseline
31-Jan-22	10:45	Fine	64.4	67.5	55.9	72.4	64.4 Measured ≤ Baseline

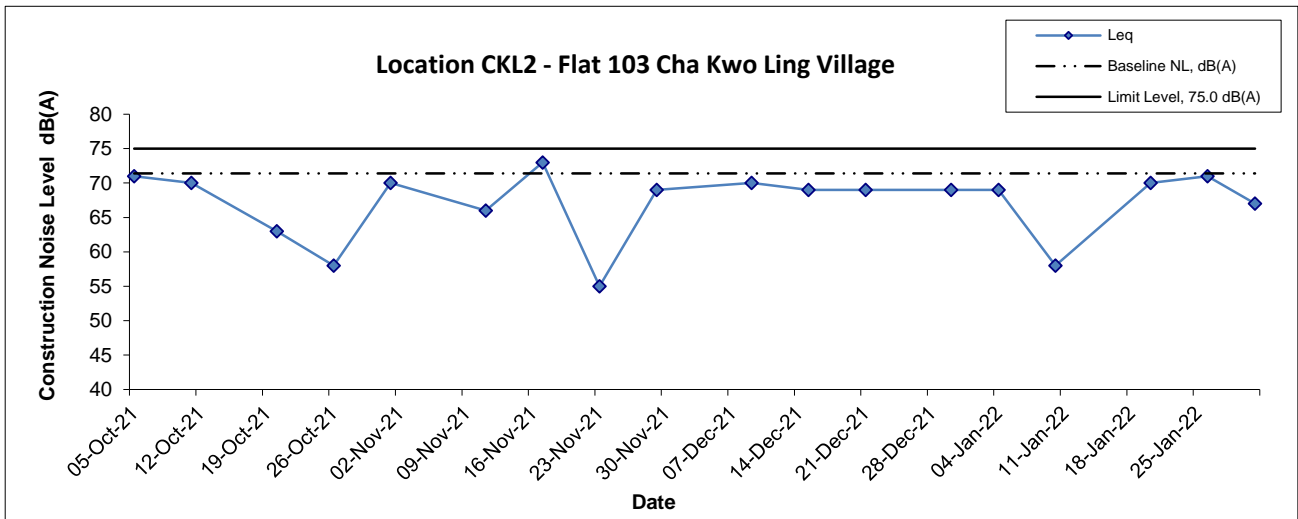
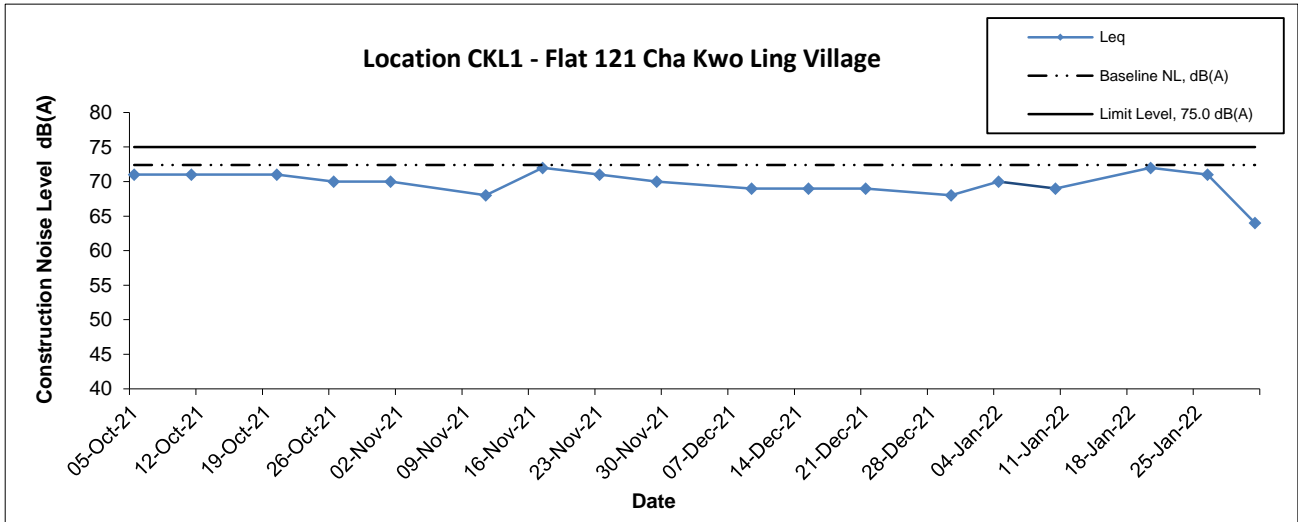
Location CKL2 - Flat 103 Cha Kwo Ling Village							
Date	Time	Weather	Unit: dB (A) (30-min)				
			Measured Noise Level			Baseline Level	Construction Noise Level
			L _{eq}	L ₁₀	L ₉₀	L _{eq}	L _{eq}
4-Jan-22	13:00	Fine	68.5	71.7	62.2	71.4	68.5 Measured ≤ Baseline
10-Jan-22	10:00	Sunny	71.6	74.9	61.0	71.4	58
20-Jan-22	10:00	Sunny	73.6	76.9	63.8	71.4	70
26-Jan-22	15:50	Fine	70.7	73.2	61.4	71.4	70.7 Measured ≤ Baseline
31-Jan-22	10:10	Fine	66.8	70.4	56.3	71.4	66.8 Measured ≤ Baseline

Location KTD1 - Centre of Excellence in Paediatrics (Rooftop of Children's Hospital)							
Date	Time	Weather	Unit: dB (A) (30-min)				
			Measured Noise Level			Baseline Level	Construction Noise Level
			L _{eq}	L ₁₀	L ₉₀	L _{eq}	L _{eq}
4-Jan-22	13:30	Sunny	64.5	67.7	62.1	78.0	64.5 Measured ≤ Baseline
10-Jan-22	15:00	Sunny	70.2	73.4	67.9	78.0	70.2 Measured ≤ Baseline
20-Jan-22	16:08	Sunny	69.3	72.4	66.4	78.0	69.3 Measured ≤ Baseline
26-Jan-22	13:45	Sunny	71.2	74.5	68.3	78.0	71.2 Measured ≤ Baseline
31-Jan-22	11:30	Cloudy	69.1	71.8	67.5	78.0	69.1 Measured ≤ Baseline

Location KER1 - Future Residential Development at Kerry Godown							
Date	Time	Weather	Unit: dB (A) (30-min)				
			Measured Noise Level			Baseline Level	Construction Noise Level
			L _{eq}	L ₁₀	L ₉₀	L _{eq}	L _{eq}
4-Jan-22	14:30	Sunny	70.6	73.4	68.1	65.0	69
10-Jan-22	13:00	Sunny	74.3	77.9	70.9	65.0	74
20-Jan-22	15:05	Sunny	73.1	76.2	70.9	65.0	72
26-Jan-22	13:00	Sunny	73.2	76.4	70.1	65.0	72
31-Jan-22	10:50	Cloudy	66.9	68.6	63.1	65.0	62

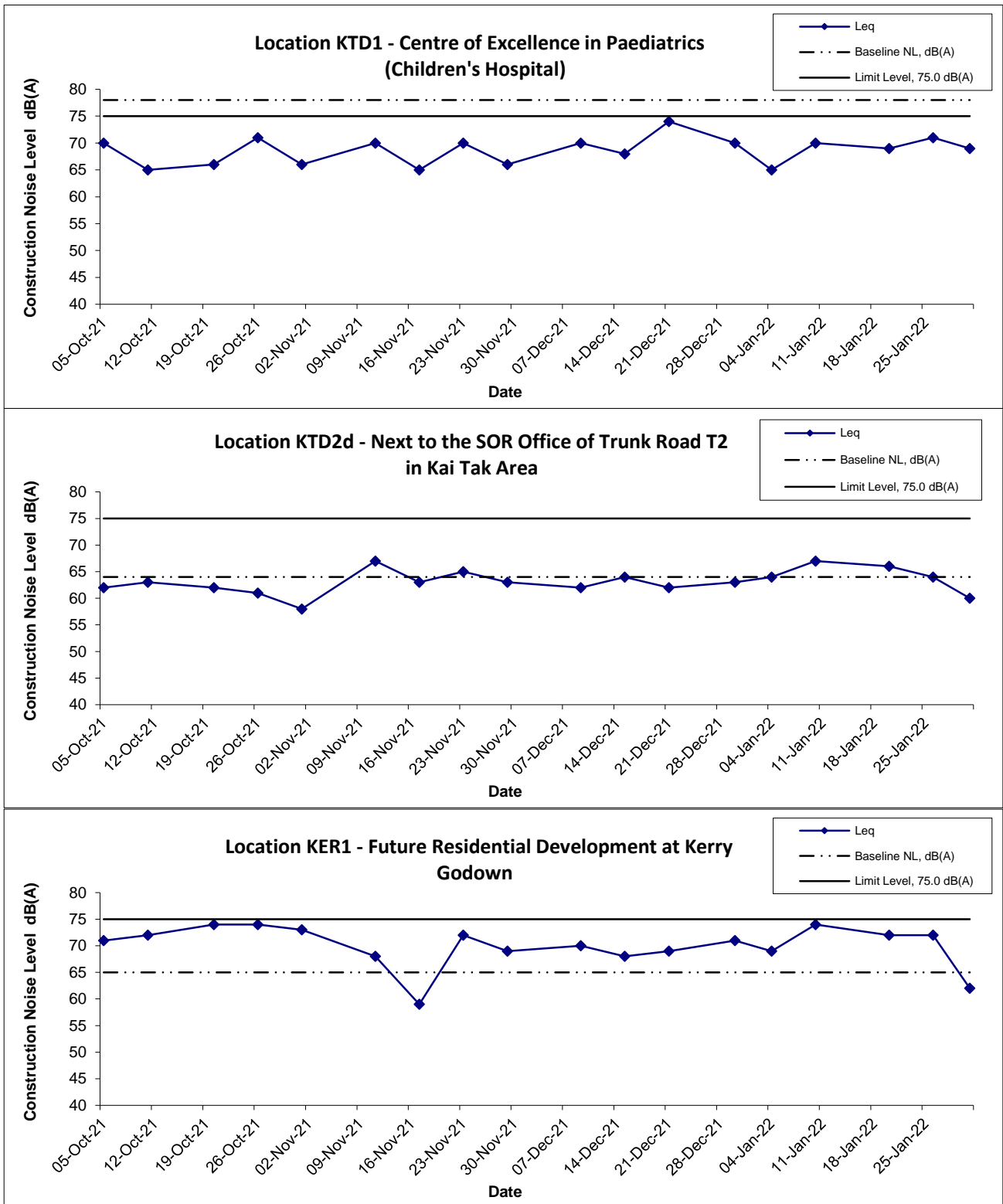
Location KTD2d - Next to the SOR Office of Trunk Road T2 in Kai Tak Area							
Date	Time	Weather	Unit: dB (A) (30-min)				
			Measured Noise Level			Baseline Level	Construction Noise Level
			L _{eq}	L ₁₀	L ₉₀	L _{eq}	L _{eq}
4-Jan-22	12:30	Sunny	67.2	68.9	65.7	64.0	64
10-Jan-22	16:37	Sunny	68.7	71.3	63.1	64.0	67
20-Jan-22	13:00	Sunny	68.4	70.3	63.3	64.0	66
26-Jan-22	11:30	Sunny	67.0	69.3	63.1	64.0	64
31-Jan-22	13:30	Cloudy	59.6	61.7	54.3	64.0	60 Measured ≤ Baseline

Noise Levels



Title Kai Tak Development – Trunk Road T2 and Infrastructure Works at the Former South Apron Graphical Presentation of Construction Noise Monitoring Results	Date	Project No.	CINOTECH
	Jan 22	MA20003	
		Appendix H	

Noise Levels



Title Kai Tak Development – Trunk Road T2 and Infrastructure Works at the Former South Apron Graphical Presentation of Construction Noise Monitoring Results	Date Jan 22	Project No. MA20003	
		Appendix H	