

Appendix H - Noise Monitoring Results

(0700-1900 hrs on Normal Weekdays)

Location CKL1 - Flat 121 Cha Kwo Ling Village							
Date	Time	Weather	Unit: dB (A) (30-min)				
			Measured Noise Level			Baseline Level	Construction Noise Level
			L _{eq}	L ₁₀	L ₉₀	L _{eq}	L _{eq}
4-May-22	9:34	Sunny	69.5	73.2	59.0	72.4	69.5 Measured ≤ Baseline
10-May-22	9:15	Drizzle	75.0	75.0	66.7	72.4	72
19-May-22	15:30	Sunny	73.4	76.7	61.1	72.4	67
25-May-22	11:37	Cloudy	72.0	75.5	63.7	72.4	72 Measured ≤ Baseline
31-May-22	16:30	Cloudy	70.7	74.4	60.1	72.4	70.7 Measured ≤ Baseline

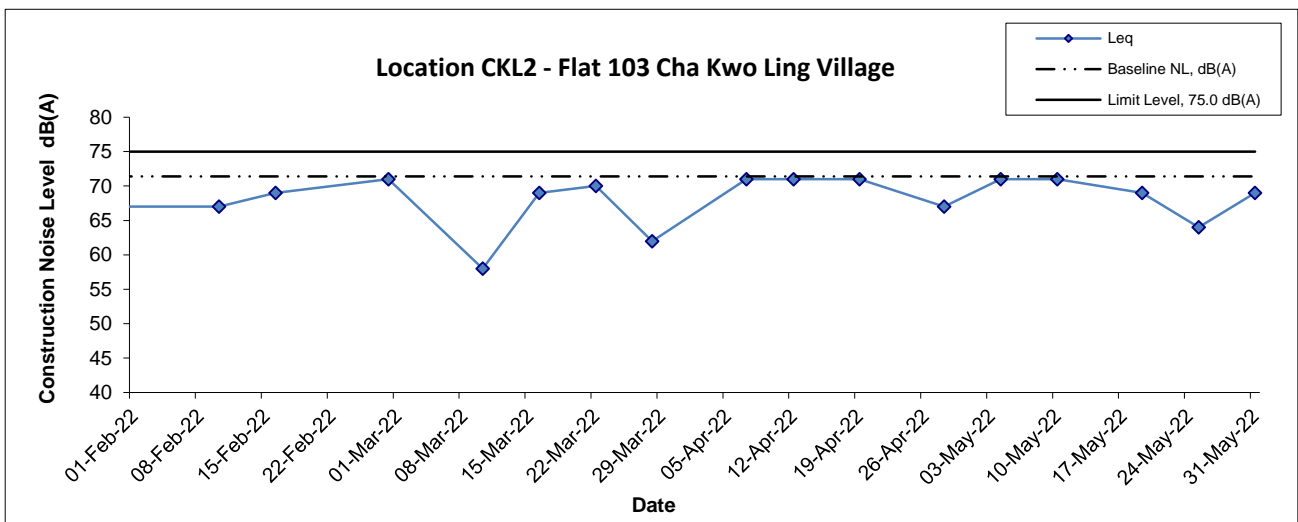
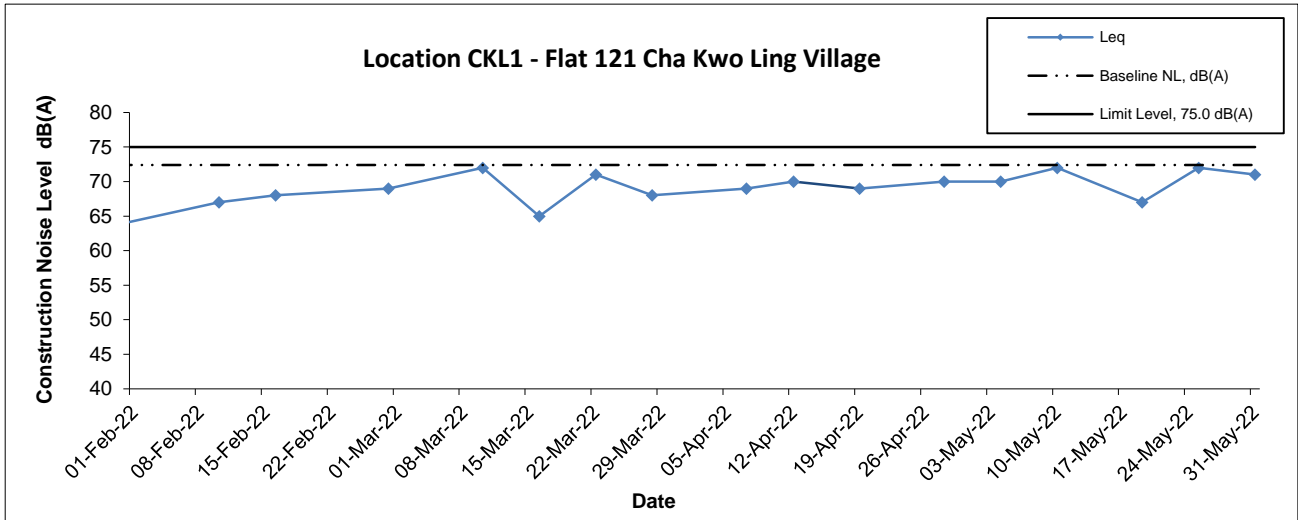
Location CKL2 - Flat 103 Cha Kwo Ling Village							
Date	Time	Weather	Unit: dB (A) (30-min)				
			Measured Noise Level			Baseline Level	Construction Noise Level
			L _{eq}	L ₁₀	L ₉₀	L _{eq}	L _{eq}
4-May-22	10:05	Sunny	71.4	74.6	60.6	71.4	71.4 Measured ≤ Baseline
10-May-22	10:00	Drizzle	74.0	75.5	64.9	71.4	71
19-May-22	14:30	Sunny	73.3	76.8	62.6	71.4	69
25-May-22	11:00	Cloudy	72.2	75.4	60.8	71.4	64
31-May-22	15:30	Cloudy	73.4	75.3	63.6	71.4	69

Location KTD1 - Centre of Excellence in Paediatrics (Rooftop of Children's Hospital)							
Date	Time	Weather	Unit: dB (A) (30-min)				
			Measured Noise Level			Baseline Level	Construction Noise Level
			L _{eq}	L ₁₀	L ₉₀	L _{eq}	L _{eq}
4-May-22	11:30	Sunny	71.0	72.1	69.5	78.0	71 Measured ≤ Baseline
10-May-22	11:00	Drizzle	69.7	70.9	68.4	78.0	69.7 Measured ≤ Baseline
19-May-22	14:01	Sunny	67.2	69.8	65.8	78.0	67.2 Measured ≤ Baseline
25-May-22	14:36	Cloudy	70.9	72.1	69.3	78.0	70.9 Measured ≤ Baseline
31-May-22	12:26	Drizzle	70.5	71.9	68.4	78.0	70.5 Measured ≤ Baseline

Location KER1 - Future Residential Development at Kerry Godown							
Date	Time	Weather	Unit: dB (A) (30-min)				
			Measured Noise Level			Baseline Level	Construction Noise Level
			L _{eq}	L ₁₀	L ₉₀	L _{eq}	L _{eq}
4-May-22	12:30	Sunny	67.9	69.2	65.0	65.0	65
10-May-22	12:30	Drizzle	66.0	68.5	62.2	65.0	59
19-May-22	13:14	Sunny	68.1	69.9	64.1	65.0	65
25-May-22	16:19	Fine	67.4	69.5	63.0	65.0	64
31-May-22	14:24	Drizzle	69.7	71.7	66.4	65.0	68

Location KTD2d - Next to the SOR Office of Trunk Road T2 in Kai Tak Area							
Date	Time	Weather	Unit: dB (A) (30-min)				
			Measured Noise Level			Baseline Level	Construction Noise Level
			L _{eq}	L ₁₀	L ₉₀	L _{eq}	L _{eq}
4-May-22	10:30	Sunny	61.6	63.0	57.6	64.0	62 Measured ≤ Baseline
10-May-22	10:00	Drizzle	58.6	60.6	55.1	64.0	59 Measured ≤ Baseline
19-May-22	14:45	Sunny	64.4	64.6	57.6	64.0	54
25-May-22	13:35	Cloudy	60.7	62.2	58.6	64.0	61 Measured ≤ Baseline
31-May-22	11:16	Drizzle	62.2	64.9	58.3	64.0	62 Measured ≤ Baseline

Noise Levels

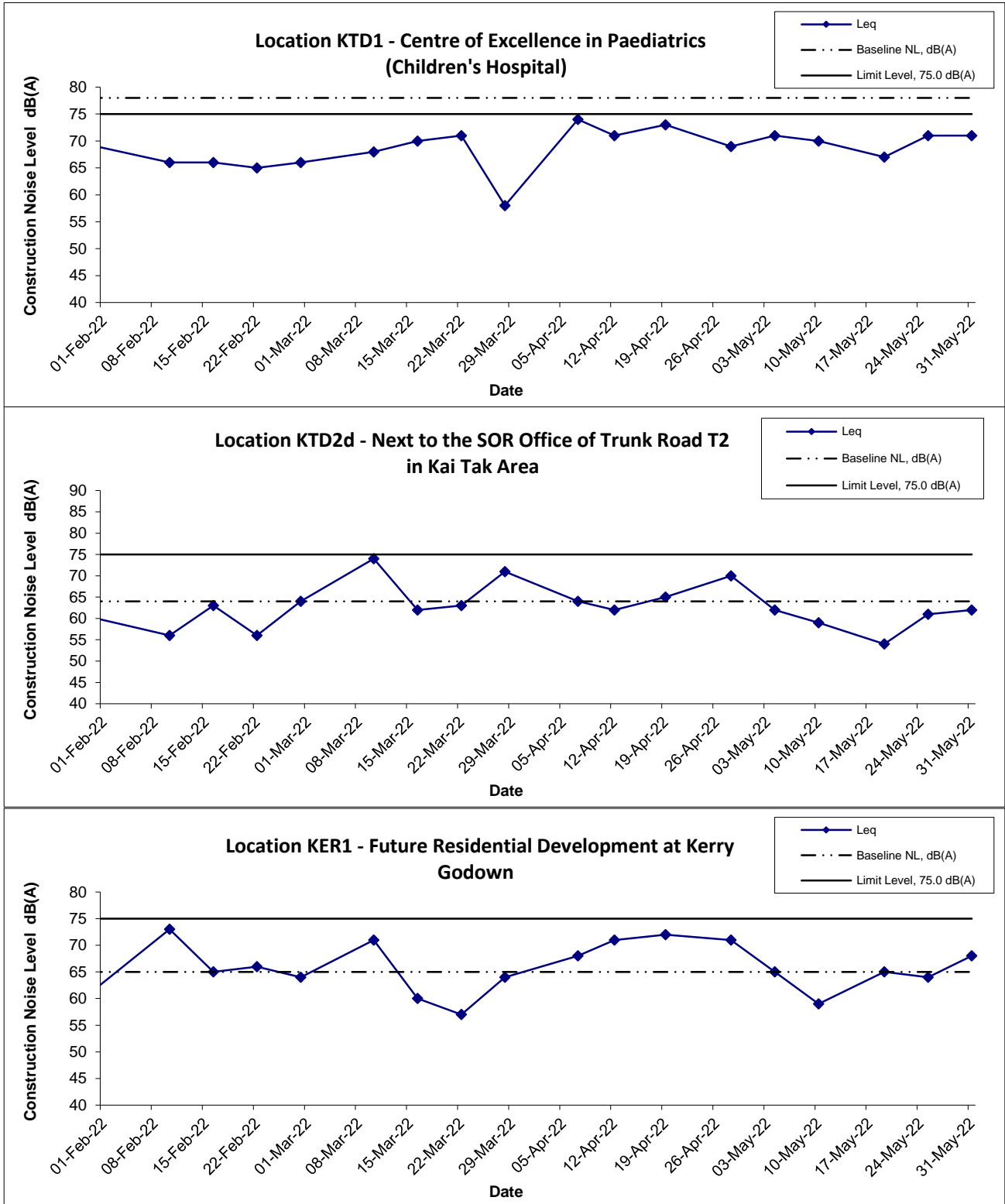


Remark:

Due to the site closure at CKL portion during the period from 20 Feb 2022 to 27 Feb 2022, monitoring works at station CKL1 and CKL2 were temporary suspended.

Title Kai Tak Development – Trunk Road T2 and Infrastructure Works at the Former South Apron Graphical Presentation of Construction Noise Monitoring Results	Date	Project No.	CINOTECH
	May 22	MA20003	
		Appendix H	

Noise Levels



Title Kai Tak Development – Trunk Road T2 and Infrastructure Works at the Former South Apron Graphical Presentation of Construction Noise Monitoring Results	Date	Project	CINOTECH
	May 22	No. MA20003	
		Appendix	H