

Page 6 of 26
Data Date: 30-Apr-22

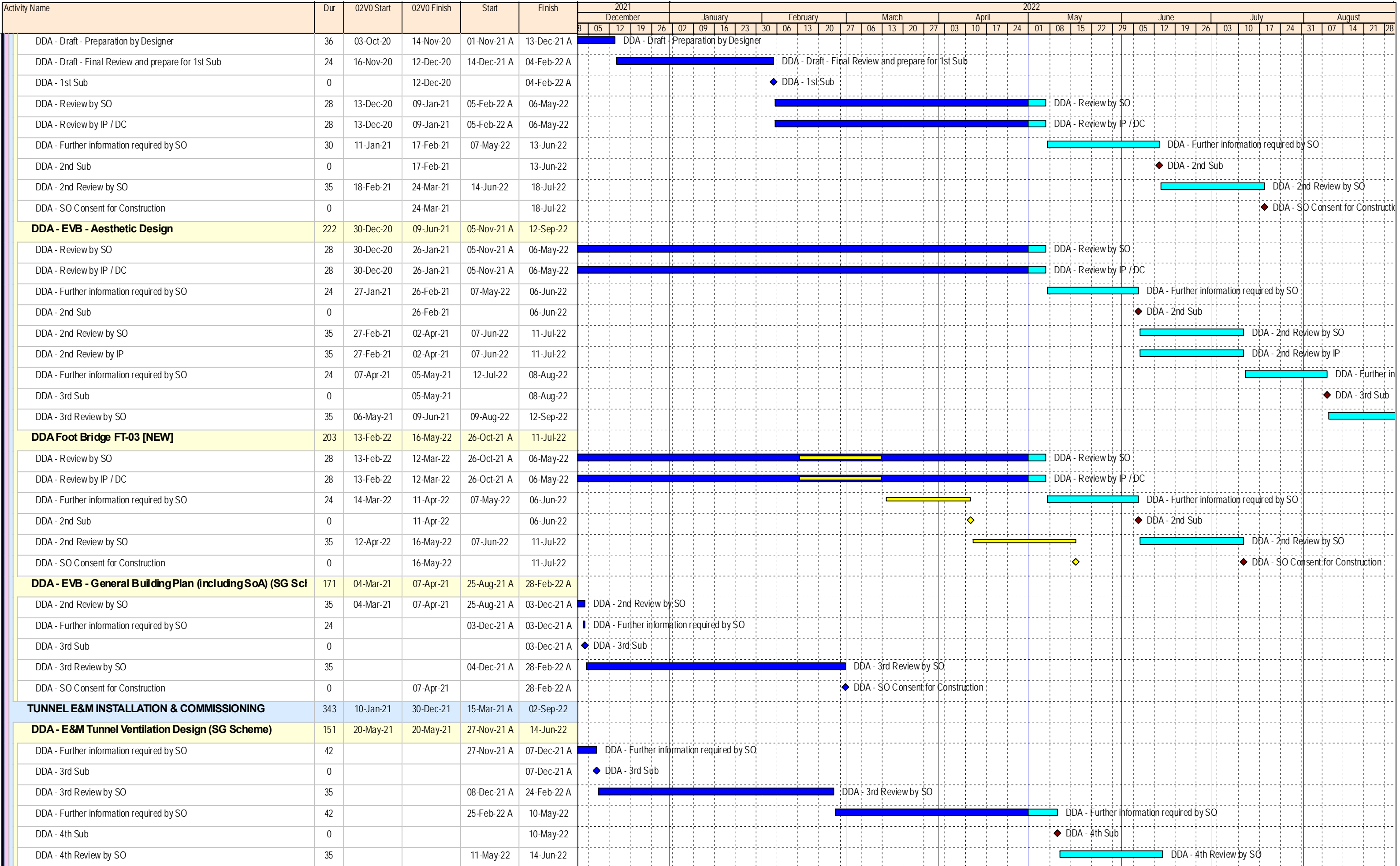
- ◆ Milestone
- Planned Bar
- Critical Activity
- ◆ Actual Milestone
- Actual Work
- ◆ Baseline Milestone
- Baseline Bar

ED/2018/04 Trunk Road T2 and Infrastructure Works for Developments at South Apron

Three Months Rolling Programme (Apr-22)



Date	Revision	Checked	Approved
18-Dec-19	00V1	WYu	
22-Feb-20	01V0	SPa/LLo	WYu
09-Apr-20	01V1	SPa/LLo	WYu
17-Jul-20	01V2	SPa/LLo	WYu
09-Oct-20	01V3	SPa/LLo	WYu
02-Jul-21	02V0	SPa/LLo	WYu



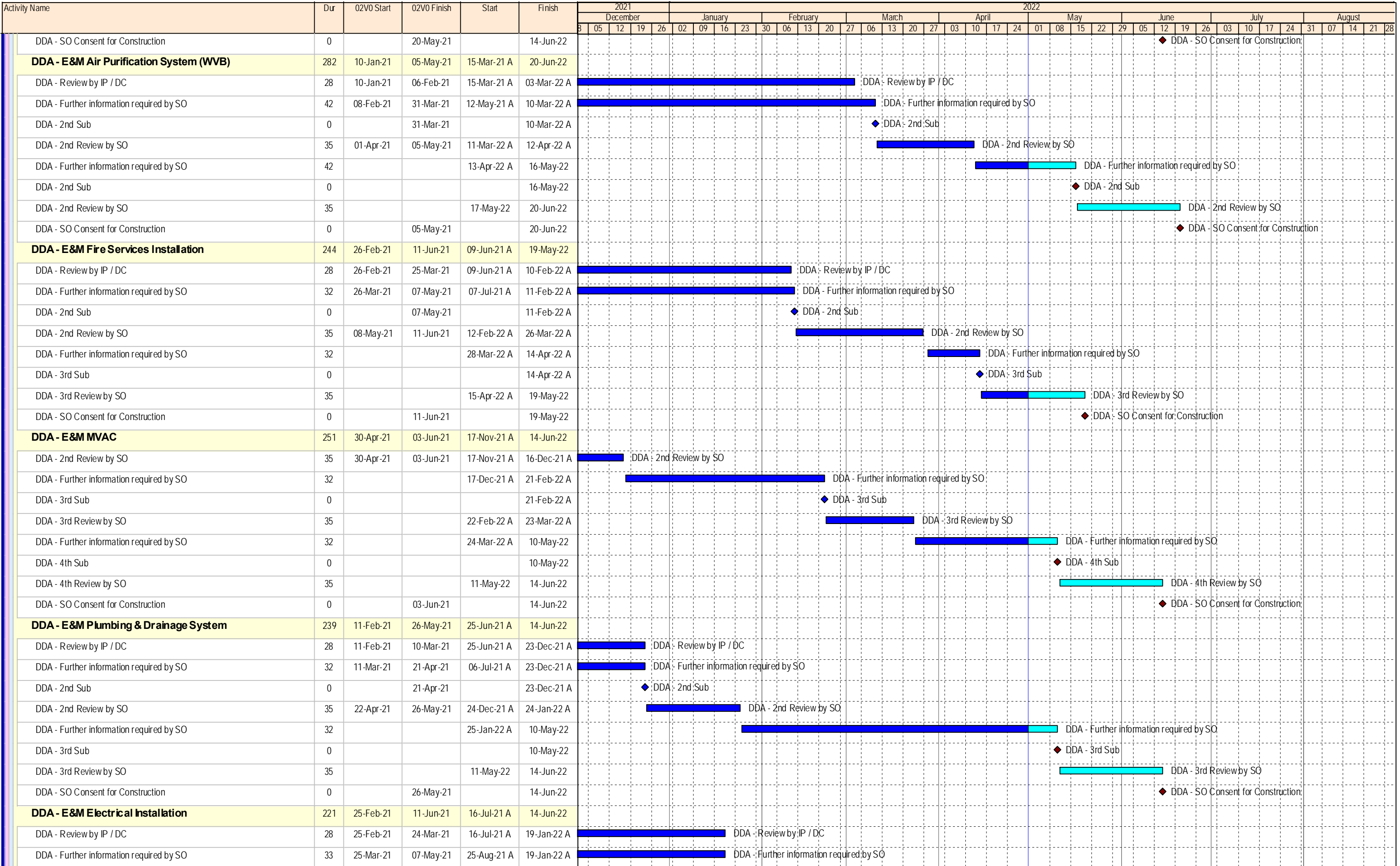
- ◆ Milestone
- Planned Bar
- Critical Activity
- ◆ Actual Milestone
- Actual Work
- ◆ Baseline Milestone
- Baseline Bar

ED/2018/04 Trunk Road T2 and Infrastructure Works for Developments at South Apron

Three Months Rolling Programme (Apr-22)



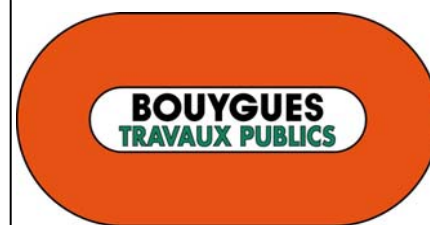
Date	Revision	Checked	Approved
18-Dec-19	00V1	WYu	
22-Feb-20	01V0	SPa/LLo	WYu
09-Apr-20	01V1	SPa/LLo	WYu
17-Jul-20	01V2	SPa/LLo	WYu
09-Oct-20	01V3	SPa/LLo	WYu
02-Jul-21	02V0	SPa/LLo	WYu



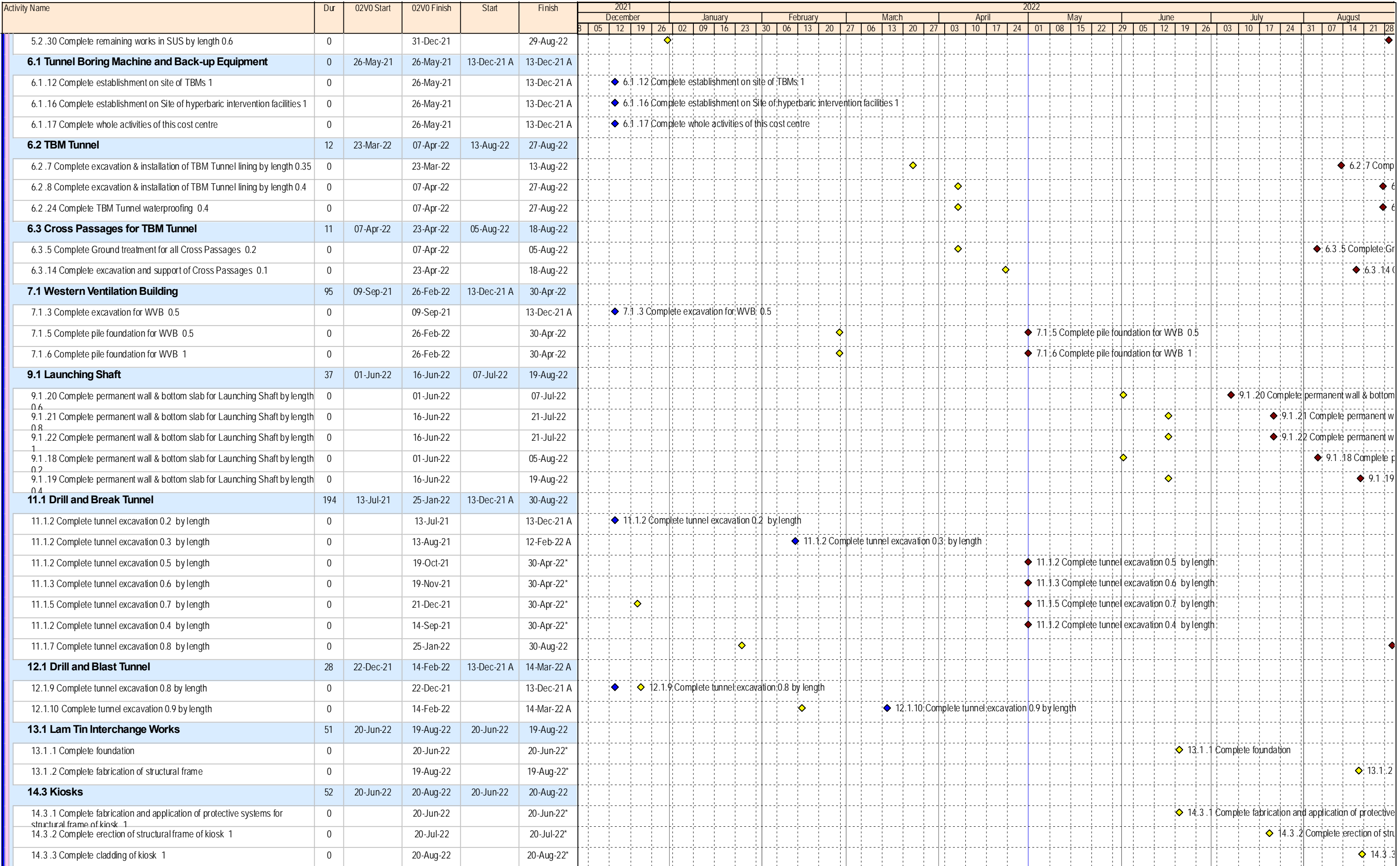
- ◆ Milestone
- Planned Bar
- Critical Activity
- ◆ Actual Milestone
- Actual Work
- ◆ Baseline Milestone
- Baseline Bar

ED/2018/04 Trunk Road T2 and Infrastructure Works for Developments at South Apron

Three Months Rolling Programme (Apr-22)



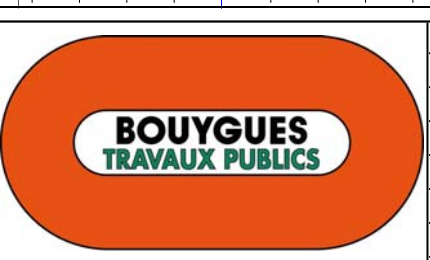
Date	Revision	Checked	Approved
18-Dec-19	00V1	WYu	
22-Feb-20	01V0	SPa/LLo	WYu
09-Apr-20	01V1	SPa/LLo	WYu
17-Jul-20	01V2	SPa/LLo	WYu
09-Oct-20	01V3	SPa/LLo	WYu
02-Jul-21	02V0	SPa/LLo	WYu



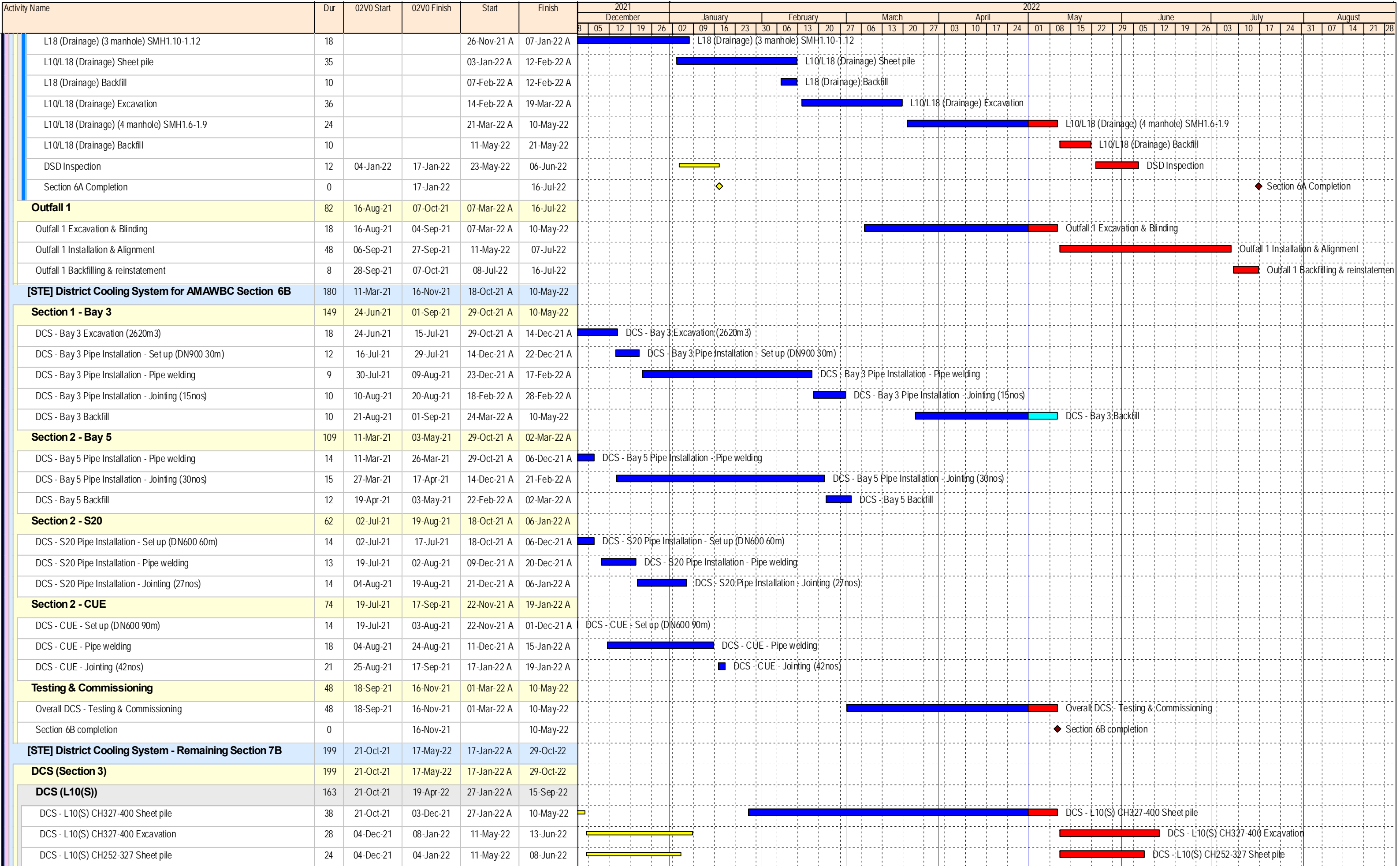
- ◆ Milestone
- Planned Bar
- Critical Activity
- ◆ Actual Milestone
- Actual Work
- ◆ Baseline Milestone
- Baseline Bar

ED/2018/04 Trunk Road T2 and Infrastructure Works for Developments at South Apron

Three Months Rolling Programme (Apr-22)



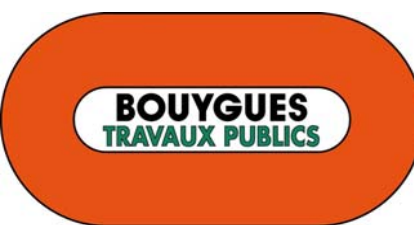
Date	Revision	Checked	Approved
18-Dec-19	00V1	WYu	
22-Feb-20	01V0	SPa/LLo	WYu
09-Apr-20	01V1	SPa/LLo	WYu
17-Jul-20	01V2	SPa/LLo	WYu
09-Oct-20	01V3	SPa/LLo	WYu
02-Jul-21	02V0	SPa/LLo	WYu



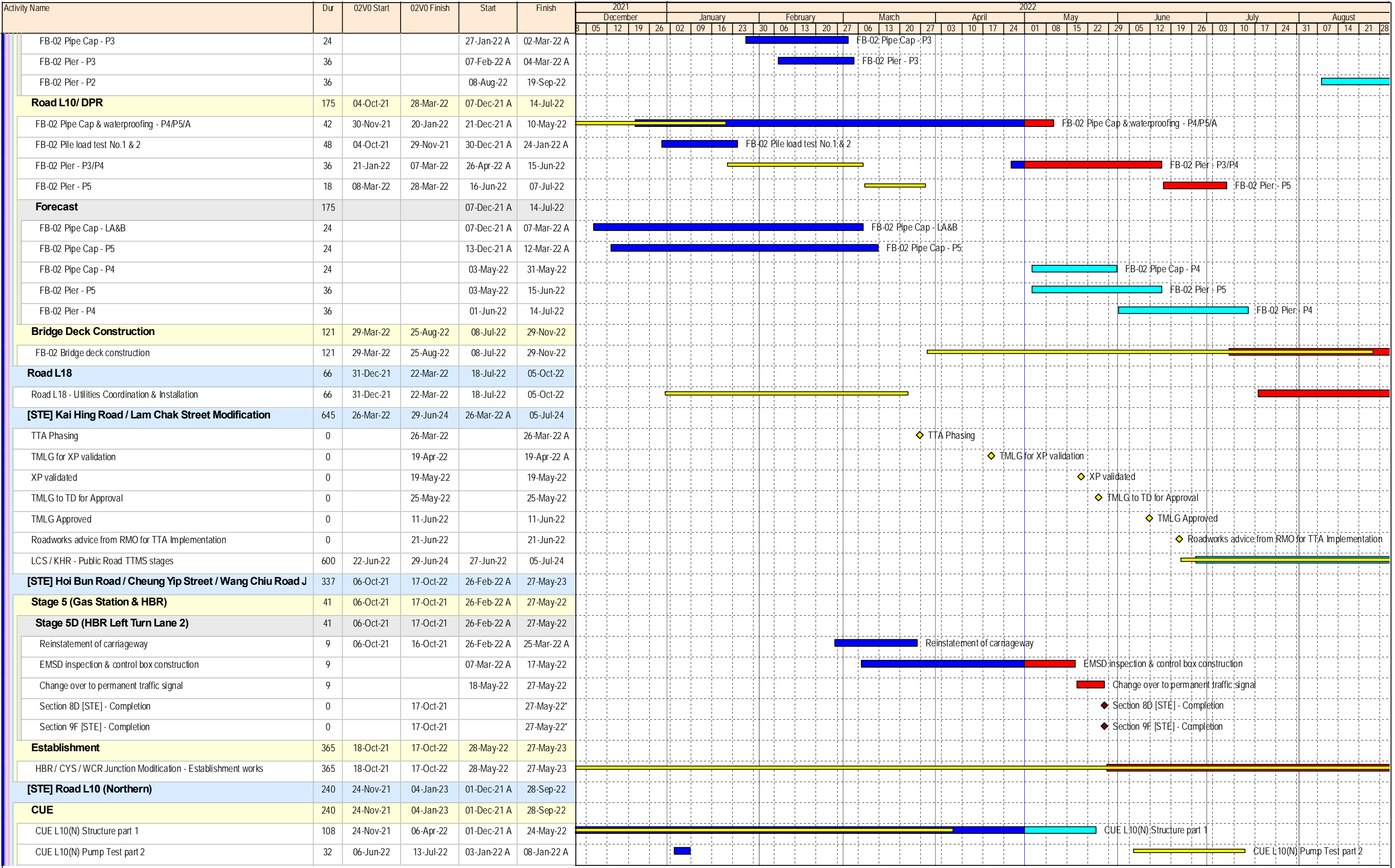
- ◆ Milestone
- Planned Bar
- Critical Activity
- ◆ Actual Milestone
- Actual Work
- Baseline Milestone
- Baseline Bar

ED/2018/04 Trunk Road T2 and Infrastructure Works for Developments at South Apron

Three Months Rolling Programme (Apr-22)



Date	Revision	Checked	Approved
18-Dec-19	00V1	WYu	
22-Feb-20	01V0	SPa/LLo	WYu
09-Apr-20	01V1	SPa/LLo	WYu
17-Jul-20	01V2	SPa/LLo	WYu
09-Oct-20	01V3	SPa/LLo	WYu
02-Jul-21	02V0	SPa/LLo	WYu



- ◆ Milestone
- Planned Bar
- Critical Activity
- ◆ Actual Milestone
- Actual Work
- ◆ Baseline Milestone
- Baseline Bar

ED/2018/04 Trunk Road T2 and Infrastructure Works for Developments at South Apron

Three Months Rolling Programme (Apr-22)



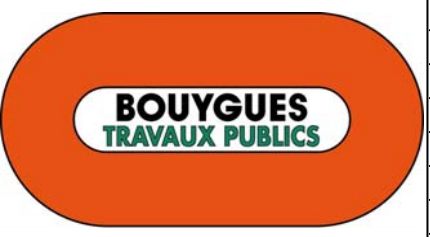
Date	Revision	Checked	Approved
18-Dec-19	00V1	WYu	
22-Feb-20	01V0	SPa/LLo	WYu
09-Apr-20	01V1	SPa/LLo	WYu
17-Jul-20	01V2	SPa/LLo	WYu
09-Oct-20	01V3	SPa/LLo	WYu
02-Jul-21	02V0	SPa/LLo	WYu

Activity Name	Dur	02V0 Start	02V0 Finish	Start	Finish	2021												2022																																			
						December					January					February					March					April					May					June					July					August							
						03	05	12	19	26	02	09	16	23	30	06	13	20	27	03	10	17	24	31	07	14	21	28	04	11	18	25	01	08	15	22	29	05	12	19	26	02	09	16	23	30	06	13	20	27	03	10	17
CUE L10(N) Excavation part 2	36	14-Jul-22	24-Aug-22	10-Jan-22 A	05-May-22	[Gantt bar: Jan 10 to May 05]												[Gantt bar: May 01 to Aug 24]																																			
CUE L10(N) Structure part 2	108	25-Aug-22	04-Jan-23	06-May-22	13-Sep-22	[Gantt bar: May 06 to Sep 13]												[Gantt bar: Sep 13 to Dec 13]																																			
Part 1	131			24-Dec-21 A	17-Jun-22	[Gantt bar: Dec 24 to Jun 17]												[Gantt bar: Jun 17 to Sep 13]																																			
CUE L10(N) Part 1 DL, Blinding, Waterproofing, BS (80m)	21			24-Dec-21 A	17-Mar-22 A	[Gantt bar: Dec 24 to Mar 17]												CUE L10(N) Part 1 DL, Blinding, Waterproofing, BS (80m)																																			
CUE L10(N) Part 1 Backfill & Strut S3 Removal	7			18-Mar-22 A	28-Mar-22 A	[Gantt bar: Mar 18 to Mar 28]												CUE L10(N) Part 1 Backfill & Strut S3 Removal																																			
CUE L10(N) Part 1 Wall & Top Slab (80m, 10d/20m)	32			29-Mar-22 A	17-May-22	[Gantt bar: Mar 29 to May 17]												CUE L10(N) Part 1 Wall & Top Slab (80m, 10d/20m)																																			
CUE L10(N) Part 1 Backfill & Remove S2 (80m, 10d/20m)	32			27-Apr-22 A	31-May-22	[Gantt bar: Apr 27 to May 31]												CUE L10(N) Part 1 Backfill & Remove S2 (80m, 10d/20m)																																			
CUE L10(N) Part 1 Backfill & Remove S1 (80m, 10d/20m)	32			10-May-22	17-Jun-22	[Gantt bar: May 10 to Jun 17]												CUE L10(N) Part 1 Backfill & Remove S1 (80m, 10d/20m)																																			
Part 2	153			10-Jan-22 A	10-Aug-22	[Gantt bar: Jan 10 to Aug 10]												[Gantt bar: Aug 10 to Nov 10]																																			
CUE L10(N) Part 2 Excavation (6262m3, 110m3/d)	57			10-Jan-22 A	05-May-22	[Gantt bar: Jan 10 to May 05]												CUE L10(N) Part 2 Excavation (6262m3, 110m3/d)																																			
CUE L10(N) Part 2 DL, Blinding, Waterproofing, BS (80m)	21			06-May-22	31-May-22	[Gantt bar: May 06 to May 31]												CUE L10(N) Part 2 DL, Blinding, Waterproofing, BS (80m)																																			
CUE L10(N) Part 2 Backfill & Strut S3 Removal	7			31-May-22	09-Jun-22	[Gantt bar: May 31 to Jun 09]												CUE L10(N) Part 2 Backfill & Strut S3 Removal																																			
CUE L10(N) Part 2 Wall & Top Slab (80m, 10d/20m)	32			10-Jun-22	18-Jul-22	[Gantt bar: Jun 10 to Jul 18]												CUE L10(N) Part 2 Wall & Top Slab (80m, 10d/20m)																																			
CUE L10(N) Part 2 Backfill & Remove S2 (80m, 10d/20m)	32			21-Jun-22	29-Jul-22	[Gantt bar: Jun 21 to Jul 29]												CUE L10(N) Part 2 Backfill & Remove S2 (80m, 10d/20m)																																			
CUE L10(N) Part 2 Backfill & Remove S1 (80m, 10d/20m)	32			04-Jul-22	10-Aug-22	[Gantt bar: Jul 04 to Aug 10]												CUE L10(N) Part 2 Backfill & Remove S1 (80m, 10d/20m)																																			
Part 3	86			17-Jun-22	28-Sep-22	[Gantt bar: Jun 17 to Sep 28]												[Gantt bar: Sep 28 to Dec 28]																																			
CUE L10(N) Part 3 ELS (Sheet pile) (2252m2, 55m2/d)	40			17-Jun-22	04-Aug-22	[Gantt bar: Jun 17 to Aug 04]												CUE L10(N) Part 3 ELS (Sheet pile) (2252m2, 55m2/d)																																			
CUE L10(N) Part 3 Excavation (5120m3, 110m3/d)	46			04-Aug-22	28-Sep-22	[Gantt bar: Aug 04 to Sep 28]												CUE L10(N) Part 3 Excavation (5120m3, 110m3/d)																																			
DEPRESSED ROAD [DPR]	222	29-Jul-21	07-Aug-21	29-Nov-21 A	01-Sep-22	[Gantt bar: Jul 29 to Sep 01]												[Gantt bar: Sep 01 to Dec 01]																																			
Permanent Structure	9	29-Jul-21	07-Aug-21	29-Nov-21 A	08-Dec-21 A	[Gantt bar: Jul 29 to Dec 08]												[Gantt bar: Dec 08 to Dec 28]																																			
Zone 1 (Ch6008 - 6045)	9	29-Jul-21	07-Aug-21	29-Nov-21 A	08-Dec-21 A	[Gantt bar: Jul 29 to Dec 08]												[Gantt bar: Dec 08 to Dec 28]																																			
Waterproofing and Backfilling	9	29-Jul-21	07-Aug-21	29-Nov-21 A	08-Dec-21 A	[Gantt bar: Jul 29 to Dec 08]												Waterproofing and Backfilling																																			
Portal Structure	222			11-Dec-21 A	01-Sep-22	[Gantt bar: Dec 11 to Sep 01]												[Gantt bar: Sep 01 to Dec 01]																																			
Forecast	222			11-Dec-21 A	01-Sep-22	[Gantt bar: Dec 11 to Sep 01]												[Gantt bar: Sep 01 to Dec 01]																																			
Remaining DPR Structure	222			11-Dec-21 A	01-Sep-22	[Gantt bar: Dec 11 to Sep 01]												[Gantt bar: Sep 01 to Dec 01]																																			
MS for breaking or remaining bulkhead dwall	0				11-Dec-21 A	◆ MS for breaking or remaining bulkhead dwall												[Gantt bar: Dec 11 to Dec 11]																																			
Breaking remaining SUS Bulkhead Dwall	60			13-Dec-21 A	19-Mar-22 A	[Gantt bar: Dec 13 to Mar 19]												Breaking remaining SUS Bulkhead Dwall																																			
MS for RC Structure construction	0				31-Dec-21 A	◆ MS for RC Structure construction												[Gantt bar: Dec 31 to Dec 31]																																			
Blinding & Waterproofing	4			03-May-22	06-May-22	[Gantt bar: May 03 to May 06]												Blinding & Waterproofing																																			
Base Slab construction + Gain strength	7			07-May-22	16-May-22	[Gantt bar: May 07 to May 16]												Base Slab construction + Gain strength																																			
Strut S4b removal	7			17-May-22	24-May-22	[Gantt bar: May 17 to May 24]												Strut S4b removal																																			
Return Wall & External part 1 + Gain strength	12			25-May-22	08-Jun-22	[Gantt bar: May 25 to Jun 08]												Return Wall & External part 1 + Gain strength																																			
Strut S3b removal	5			09-Jun-22	14-Jun-22	[Gantt bar: Jun 09 to Jun 14]												Strut S3b removal																																			
Remaining adit wall part 1 + Gain strength	14			15-Jun-22	30-Jun-22	[Gantt bar: Jun 15 to Jun 30]												Remaining adit wall part 1 + Gain strength																																			
Concrete strut & lateral beam + Gain strength	9			02-Jul-22	12-Jul-22	[Gantt bar: Jul 02 to Jul 12]												Concrete strut & lateral beam + Gain strength																																			
Strut S3 removal	3			13-Jul-22	15-Jul-22	[Gantt bar: Jul 13 to Jul 15]												Strut S3 removal																																			
Return Wall & External part 2 + Gain strength	11			16-Jul-22	28-Jul-22	[Gantt bar: Jul 16 to Jul 28]												Return Wall & External part 2 + Gain strength																																			
Remaining adit wall part 2 + Gain strength	10			29-Jul-22	09-Aug-22	[Gantt bar: Jul 29 to Aug 09]												Remaining adit wall part 2 + Gain strength																																			
Remaining carriageway slab + Gain strength	10			10-Aug-22	20-Aug-22	[Gantt bar: Aug 10 to Aug 20]												Remaining carriageway slab + Gain strength																																			
Remaining external wall + Gain strength	10			22-Aug-22	01-Sep-22	[Gantt bar: Aug 22 to Sep 01]												Remaining external wall + Gain strength																																			

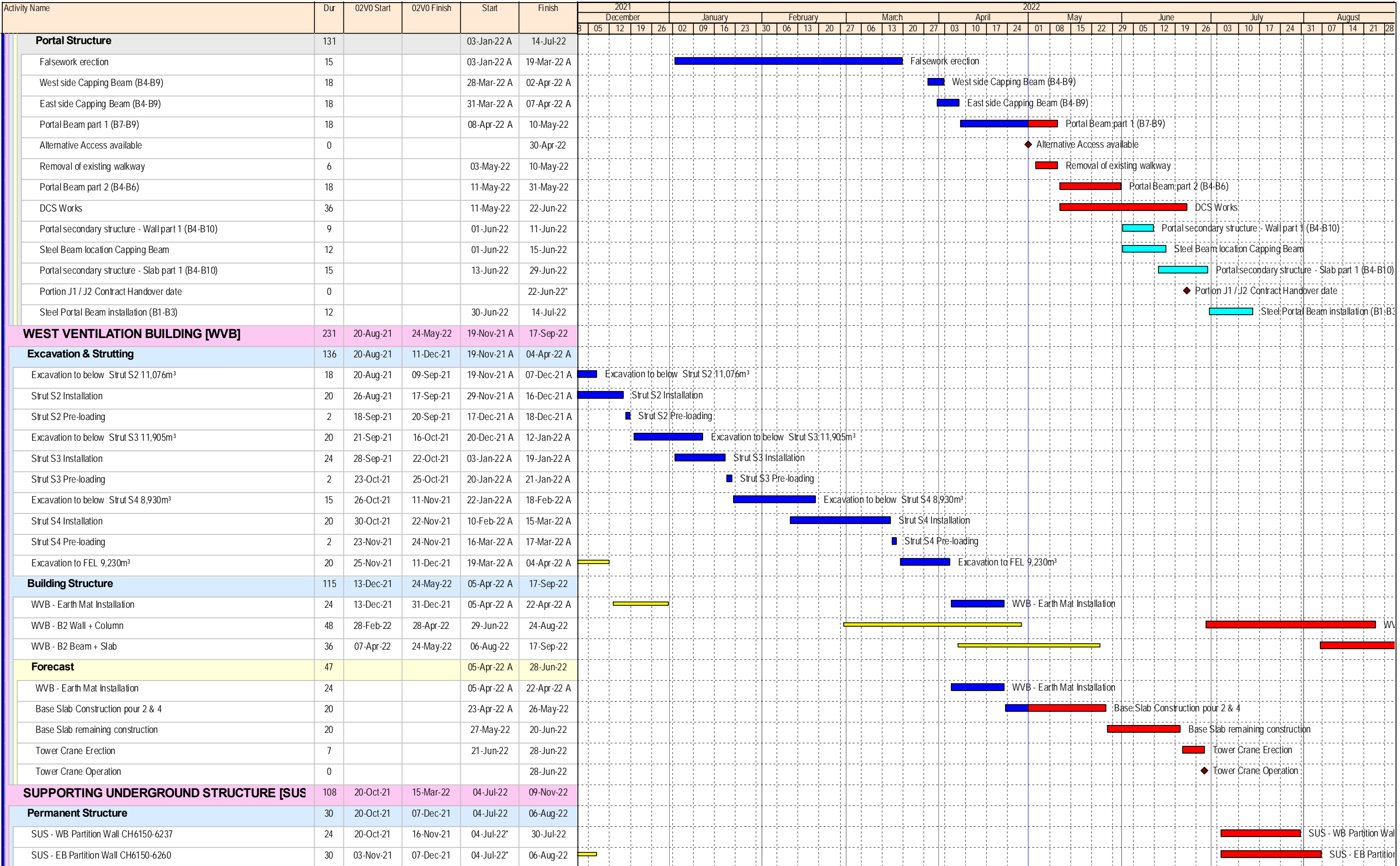
- ◆ Milestone
- Planned Bar
- Critical Activity
- ◆ Actual Milestone
- Actual Work
- ◆ Baseline Milestone
- Baseline Bar

ED/2018/04 Trunk Road T2 and Infrastructure Works for Developments at South Apron

Three Months Rolling Programme (Apr-22)



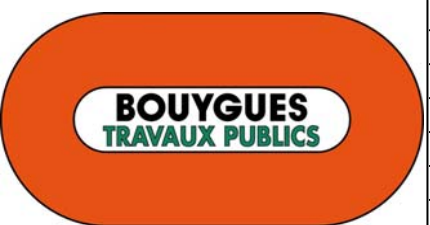
Date	Revision	Checked	Approved
18-Dec-19	00V1	WYu	
22-Feb-20	01V0	SPa/LLo	WYu
09-Apr-20	01V1	SPa/LLo	WYu
17-Jul-20	01V2	SPa/LLo	WYu
09-Oct-20	01V3	SPa/LLo	WYu
02-Jul-21	02V0	SPa/LLo	WYu



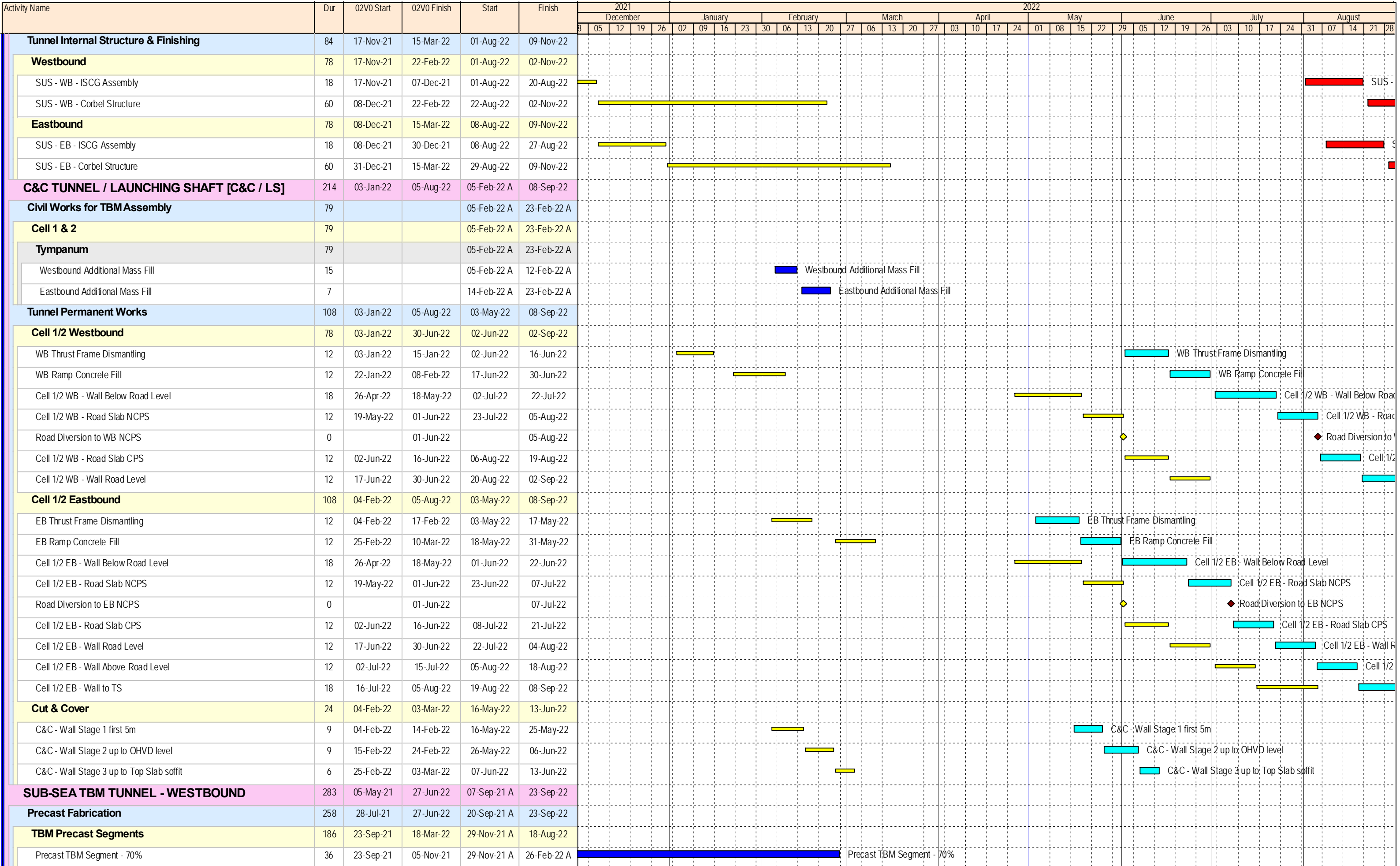
- Milestone
- Planned Bar
- Critical Activity
- Actual Milestone
- Actual Work
- Baseline Milestone
- Baseline Bar

ED/2018/04 Trunk Road T2 and Infrastructure Works for Developments at South Apron

Three Months Rolling Programme (Apr-22)



Date	Revision	Checked	Approved
18-Dec-19	00V1	WYu	
22-Feb-20	01V0	SPa/LLo	WYu
09-Apr-20	01V1	SPa/LLo	WYu
17-Jul-20	01V2	SPa/LLo	WYu
09-Oct-20	01V3	SPa/LLo	WYu
02-Jul-21	02V0	SPa/LLo	WYu



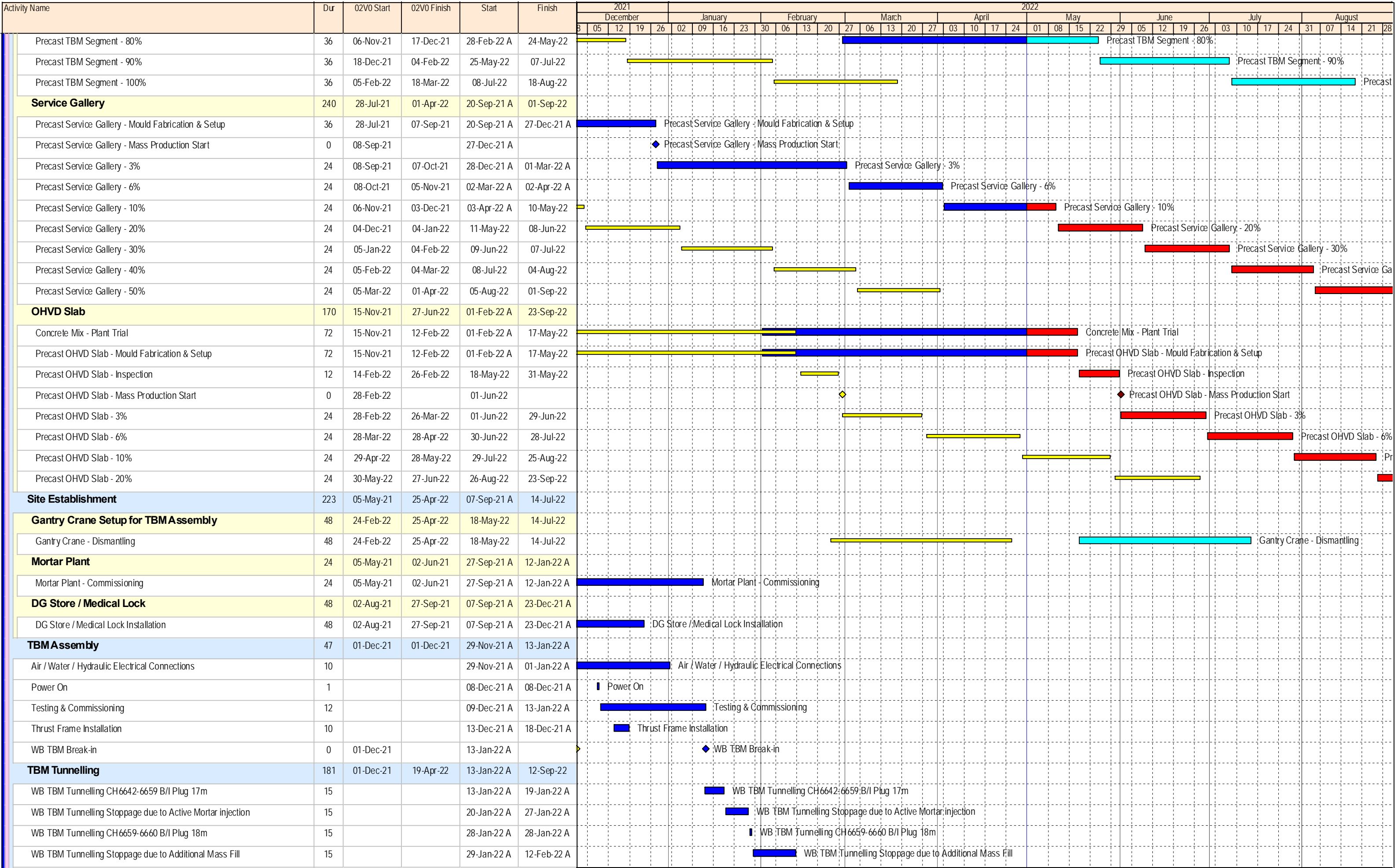
- ◆ Milestone
- Planned Bar
- Critical Activity
- ◆ Actual Milestone
- Actual Work
- ◆ Baseline Milestone
- Baseline Bar

ED/2018/04 Trunk Road T2 and Infrastructure Works for Developments at South Apron

Three Months Rolling Programme (Apr-22)



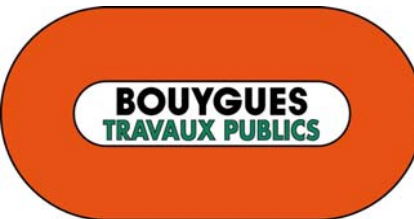
Date	Revision	Checked	Approved
18-Dec-19	00V1	WYu	
22-Feb-20	01V0	SPa/LLo	WYu
09-Apr-20	01V1	SPa/LLo	WYu
17-Jul-20	01V2	SPa/LLo	WYu
09-Oct-20	01V3	SPa/LLo	WYu
02-Jul-21	02V0	SPa/LLo	WYu



- ◆ Milestone
- Planned Bar
- Critical Activity
- ◆ Actual Milestone
- Actual Work
- ◆ Baseline Milestone
- Baseline Bar

ED/2018/04 Trunk Road T2 and Infrastructure Works for Developments at South Apron

Three Months Rolling Programme (Apr-22)



Date	Revision	Checked	Approved
18-Dec-19	00V1	WYu	
22-Feb-20	01V0	SPa/LLo	WYu
09-Apr-20	01V1	SPa/LLo	WYu
17-Jul-20	01V2	SPa/LLo	WYu
09-Oct-20	01V3	SPa/LLo	WYu
02-Jul-21	02V0	SPa/LLo	WYu

Activity Name	Dur	02V0 Start	02V0 Finish	Start	Finish	2021												2022																								
						December					January					February		March					April				May				June				July				August			
						03	05	12	19	26	02	09	16	23	30	06	13	20	27	03	10	17	24	01	08	15	22	29	05	12	19	26	02	09	16	23	30	06	13	20	27	
WB TBM Tunnelling Stoppage due to Covid-19 outbreak	15			13-Feb-22 A	28-Feb-22 A																																					
WB TBM Tunnelling CH6660-6665 B/I Plug 23m	3	01-Dec-21	15-Dec-21	01-Mar-22 A	01-Mar-22 A																																					
WB TBM forecast re-start excavation	0			01-Mar-22 A																																						
WB TBM Tunnelling CH6665-6710 ALL/CDG 68m	16	16-Dec-21	31-Dec-21	02-Mar-22 A	10-Mar-22 A																																					
WB TBM Tunnelling CH6710-6725 ALL/CDG 83m	7	01-Jan-22	07-Jan-22	11-Mar-22 A	13-Mar-22 A																																					
WB TBM Tunnelling CH6725-6756 ALL/CDG 114m	7			14-Mar-22 A	24-May-22																																					
WB TBM Tunnelling CH6756-6777 CDG/Boulder 135m	4	08-Jan-22	14-Jan-22	25-May-22	28-May-22																																					
WB TBM Stoppage for ISIG 1 Installation	9			29-May-22	06-Jun-22																																					
WB TBM Tunnelling CH6777-6789 CDG/Boulder 147m	3			07-Jun-22	09-Jun-22																																					
WB TBM Tunnelling CH6789-7098 ALL/CDG 456m	38	15-Jan-22	21-Feb-22	10-Jun-22	17-Jul-22																																					
WB TBM Tunnelling CH7098-7198 ALL/CDG 556m	11	22-Feb-22	04-Mar-22	18-Jul-22	28-Jul-22																																					
WB TBM Tunnelling CH7198-7218 ALL/CDG 576m	2	05-Mar-22	06-Mar-22	29-Jul-22	30-Jul-22																																					
WB TBM Tunnelling CH7218-7240 CDG/Boulder 598m	3	07-Mar-22	09-Mar-22	31-Jul-22	02-Aug-22																																					
WB TBM Tunnelling CH7240-7284 ALL/CDG 642m	4	10-Mar-22	13-Mar-22	03-Aug-22	06-Aug-22																																					
WB TBM Tunnelling CH7284-7379 ALL/CDG 737m	9	14-Mar-22	22-Mar-22	07-Aug-22	15-Aug-22																																					
WB TBM Tunnelling CH7379-7391 CDG/Boulder 749m	2	23-Mar-22	24-Mar-22	16-Aug-22	17-Aug-22																																					
WB TBM Tunnelling CH7391-7434 Boulder 792m	7	25-Mar-22	31-Mar-22	18-Aug-22	24-Aug-22																																					
WB TBM Tunnelling CH7434-7466 CDG/Boulder 824m	4	01-Apr-22	04-Apr-22	25-Aug-22	28-Aug-22																																					
WB TBM Tunnelling CH7466-7623 ALL/CDG 981m	15	05-Apr-22	19-Apr-22	29-Aug-22	12-Sep-22																																					
Gallery B Installation	200	19-Mar-22	08-Apr-22	27-Dec-21 A	31-Aug-22																																					
WB TBM Tunnel - Gallery B CH7103-7203 100m CP12	10	19-Mar-22	30-Mar-22	12-Aug-22	23-Aug-22																																					
WB TBM Tunnel - Gallery B CH7203-7303 100m CP13	7	31-Mar-22	08-Apr-22	24-Aug-22	31-Aug-22																																					
Forecast	166			27-Dec-21 A	22-Jul-22																																					
Spreader Beam, Hook, Hook Block etc. (from Italy by sea)	56			27-Dec-21 A	15-Mar-22 A																																					
Wheels (from Italy by air)	10			30-Dec-21 A	07-Jan-22 A																																					
Ramp delivery (from China by road)	6			06-Jan-22 A	11-Jan-22 A																																					
Loader (from China by road)	13			21-Jan-22 A	26-Jan-22 A																																					
Ramp pre-assembly at surface	12			27-Jan-22 A	16-Feb-22 A																																					
Loader pre-assembly at surface	6			17-Feb-22 A	25-Feb-22 A																																					
Shifting way curve shape extension & Footing	6			23-May-22	28-May-22																																					
Construction of Notch/Mass Fill to C&C Road Level	9			30-May-22	08-Jun-22																																					
Lower ISIG into Shaft	3			30-May-22	01-Jun-22																																					
Thrust Frame Removal	6			02-Jun-22	08-Jun-22																																					
Install abd Assembly of Spreader Beam	6			02-Jun-22	09-Jun-22																																					
ISIG Commissioning	6			10-Jun-22	16-Jun-22																																					
Gallery G-W1 to W5 by crawler crane @ 1 no/d	2			17-Jun-22	18-Jun-22																																					
WB ISIG Gallery B Installation start	0			17-Jun-22																																						
Gallery EMVD installation by crawler crane	1			20-Jun-22	20-Jun-22																																					
Gallery G-W6 to G-W12 installation by ISIG @ 3nos/d	2			21-Jun-22	22-Jun-22																																					
Gallery B installation inside FT @ 6nos/d	1			23-Jun-22	23-Jun-22																																					

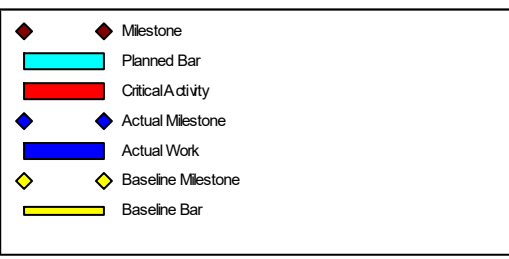
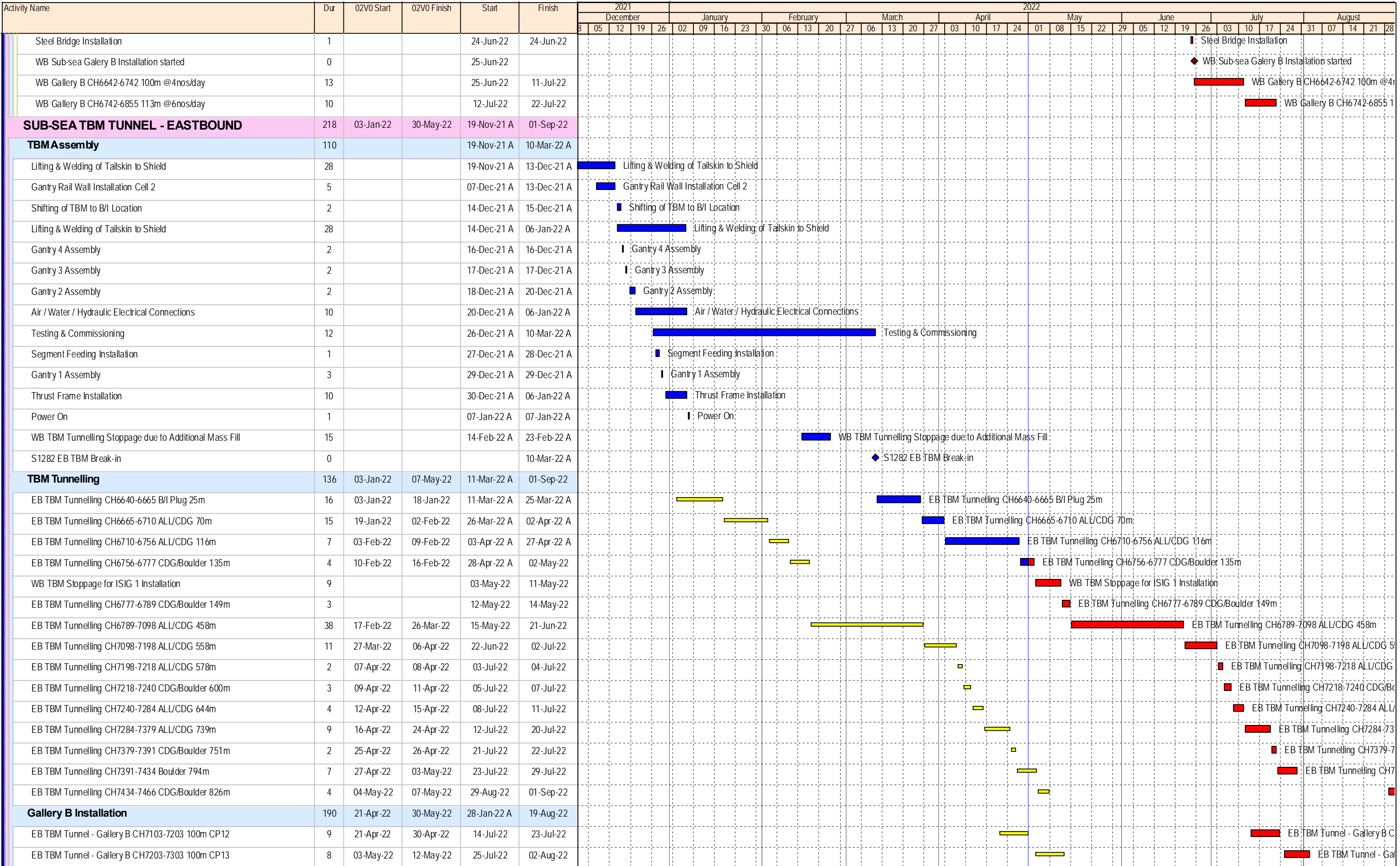
- ◆ Milestone
- Planned Bar
- Critical Activity
- ◆ Actual Milestone
- Actual Work
- ◆ Baseline Milestone
- Baseline Bar

ED/2018/04 Trunk Road T2 and Infrastructure Works for Developments at South Apron

Three Months Rolling Programme (Apr-22)



Date	Revision	Checked	Approved
18-Dec-19	00V1	WYu	
22-Feb-20	01V0	SPa/LLo	WYu
09-Apr-20	01V1	SPa/LLo	WYu
17-Jul-20	01V2	SPa/LLo	WYu
09-Oct-20	01V3	SPa/LLo	WYu
02-Jul-21	02V0	SPa/LLo	WYu

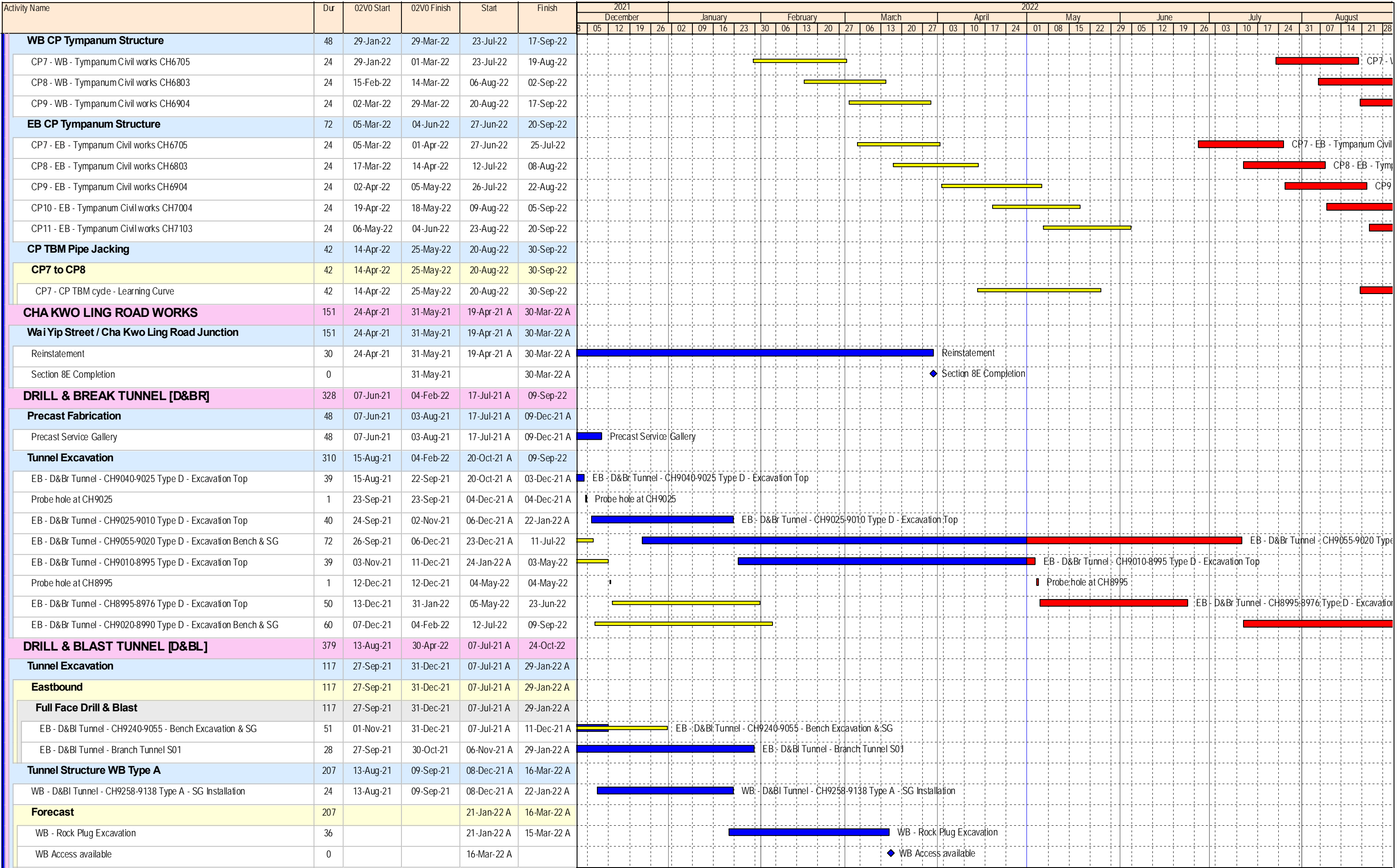


ED/2018/04 Trunk Road T2 and Infrastructure Works for Developments at South Apron

Three Months Rolling Programme (Apr-22)



Date	Revision	Checked	Approved
18-Dec-19	00V1	WYu	
22-Feb-20	01V0	SPa/LLo	WYu
09-Apr-20	01V1	SPa/LLo	WYu
17-Jul-20	01V2	SPa/LLo	WYu
09-Oct-20	01V3	SPa/LLo	WYu
02-Jul-21	02V0	SPa/LLo	WYu



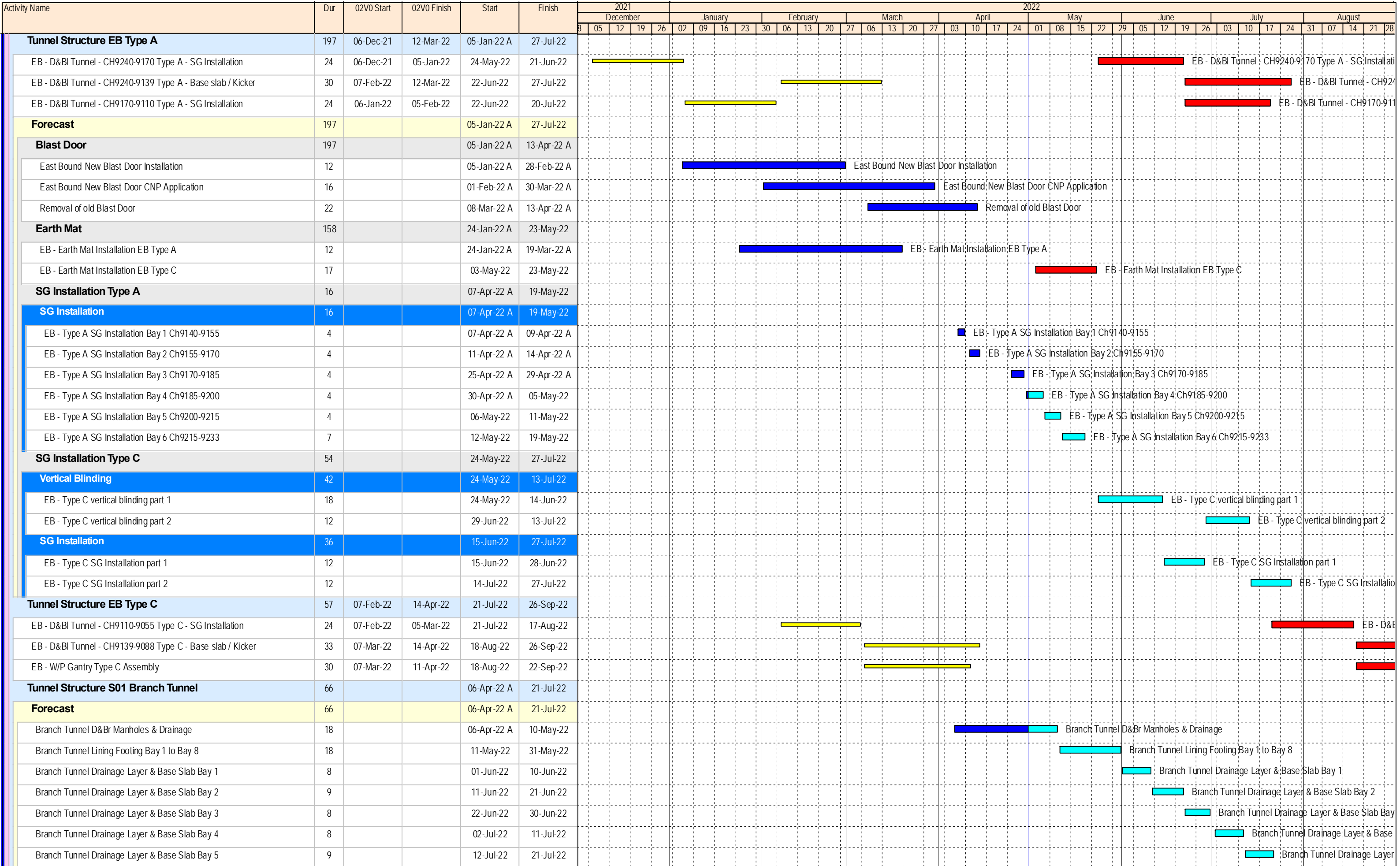
- ◆ Milestone
- Planned Bar
- Critical Activity
- ◆ Actual Milestone
- Actual Work
- ◆ Baseline Milestone
- Baseline Bar

ED/2018/04 Trunk Road T2 and Infrastructure Works for Developments at South Apron

Three Months Rolling Programme (Apr-22)



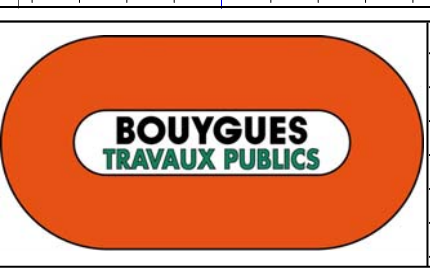
Date	Revision	Checked	Approved
18-Dec-19	00V1	WYu	
22-Feb-20	01V0	SPa/LLo	WYu
09-Apr-20	01V1	SPa/LLo	WYu
17-Jul-20	01V2	SPa/LLo	WYu
09-Oct-20	01V3	SPa/LLo	WYu
02-Jul-21	02V0	SPa/LLo	WYu



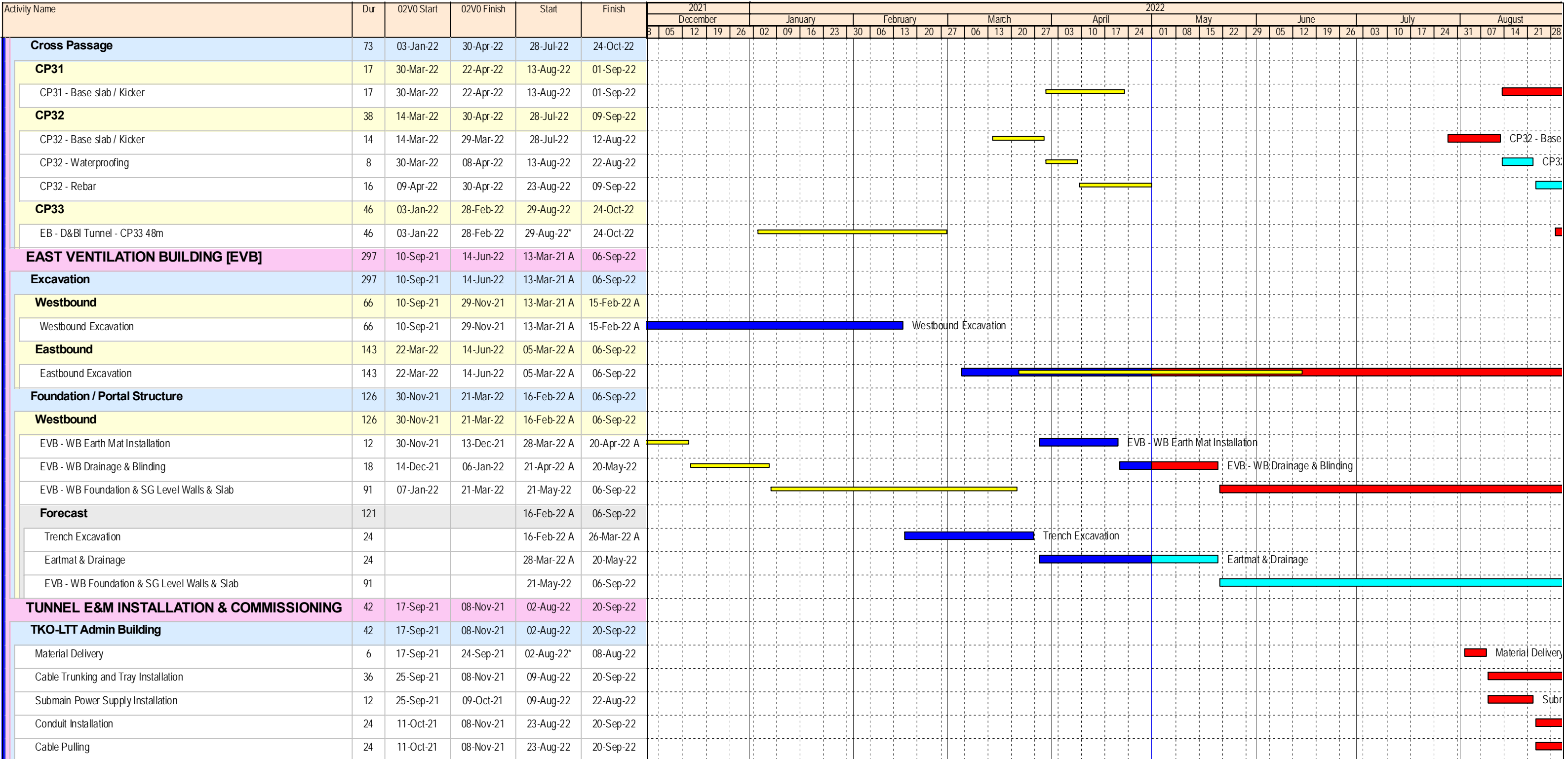
- ◆ Milestone
- Planned Bar
- Critical Activity
- ◆ Actual Milestone
- Actual Work
- ◆ Baseline Milestone
- Baseline Bar

ED/2018/04 Trunk Road T2 and Infrastructure Works for Developments at South Apron

Three Months Rolling Programme (Apr-22)



Date	Revision	Checked	Approved
18-Dec-19	00V1	WYu	
22-Feb-20	01V0	SPa/LLo	WYu
09-Apr-20	01V1	SPa/LLo	WYu
17-Jul-20	01V2	SPa/LLo	WYu
09-Oct-20	01V3	SPa/LLo	WYu
02-Jul-21	02V0	SPa/LLo	WYu



- ◆ Milestone
- Planned Bar
- Critical Activity
- ◆ Actual Milestone
- Actual Work
- ◆ Baseline Milestone
- Baseline Bar

ED/2018/04 Trunk Road T2 and Infrastructure Works for Developments at South Apron

Three Months Rolling Programme (Apr-22)



Date	Revision	Checked	Approved
18-Dec-19	00V1	WYu	
22-Feb-20	01V0	SPa/LLo	WYu
09-Apr-20	01V1	SPa/LLo	WYu
17-Jul-20	01V2	SPa/LLo	WYu
09-Oct-20	01V3	SPa/LLo	WYu
02-Jul-21	02V0	SPa/LLo	WYu