

## Appendix F - 24-hour TSP Monitoring Results

### Location AM1 - Tin Hau Temple

Start Date	Weather	Air	Atmospheric	Filter Weight (g)		Particulate	Elapse Time		Sampling	Flow Rate (m <sup>3</sup> /min.)		Av. flow	Total vol.	Conc.
	Condition	Temp. (K)	Pressure, Pa (mmHg)	Initial	Final	Weight (g)	Initial	Final	Time(hrs.)	Initial	Final	(m <sup>3</sup> /min)	(m <sup>3</sup> )	(µg/m <sup>3</sup> )
1-Feb-21	Sunny	293.6	765.7	2.6650	2.9262	0.2612	7810.7	7834.7	24.0	1.22	1.22	1.22	1757.7	148.6
6-Feb-21	Cloudy	293.1	764.6	2.6770	2.8834	0.2064	7834.7	7858.7	24.0	1.22	1.22	1.22	1758.0	117.4
10-Feb-21	Sunny	290.0	761.6	2.6611	2.7249	0.0638	7858.7	7882.7	24.0	1.23	1.22	1.23	1764.1	36.2
16-Feb-21	Sunny	293.4	764.4	2.7412	2.8706	0.1294	7882.7	7906.7	24.0	1.21	1.21	1.21	1746.7	74.1
22-Feb-21	Sunny	294.6	762.6	2.6567	2.8565	0.1998	7906.7	7930.7	24.0	1.21	1.21	1.21	1740.9	114.8
27-Feb-21	Sunny	292.4	762.1	2.7649	2.9474	0.1825	7930.7	7954.7	24.0	1.21	1.21	1.21	1747.2	104.5
													Min	36.2
													Max	148.6
													Average	99.2

### Location AM2 - Sai Tso Wan Recreation Ground

Start Date	Weather	Air	Atmospheric	Filter Weight (g)		Particulate	Elapse Time		Sampling	Flow Rate (m <sup>3</sup> /min.)		Av. flow	Total vol.	Conc.
	Condition	Temp. (K)	Pressure, Pa (mmHg)	Initial	Final	Weight (g)	Initial	Final	Time(hrs.)	Initial	Final	(m <sup>3</sup> /min)	(m <sup>3</sup> )	(µg/m <sup>3</sup> )
1-Feb-21	N/A	N/A	N/A	N/A	N/A	N/A	N/A	N/A	N/A	N/A	N/A	N/A	N/A	N/A
6-Feb-21	N/A	N/A	N/A	N/A	N/A	N/A	N/A	N/A	N/A	N/A	N/A	N/A	N/A	N/A
10-Feb-21	Sunny	290.0	761.6	2.6155	2.6909	0.0754	28963.0	28987.0	24.0	1.23	1.22	1.23	1764.1	42.7
16-Feb-21	Sunny	293.4	764.4	2.7471	2.8091	0.0620	28987.0	29011.0	24.0	1.21	1.21	1.21	1744.6	35.5
22-Feb-21	Sunny	294.6	762.6	2.7643	2.8360	0.0717	29011.0	29035.0	24.0	1.21	1.21	1.21	1739.1	41.2
27-Feb-21	Sunny	292.4	762.1	2.747	2.8021	0.0551	29035.0	29059.0	24.0	1.21	1.21	1.21	1745.0	31.6
													Min	31.6
													Max	42.7
													Average	37.8

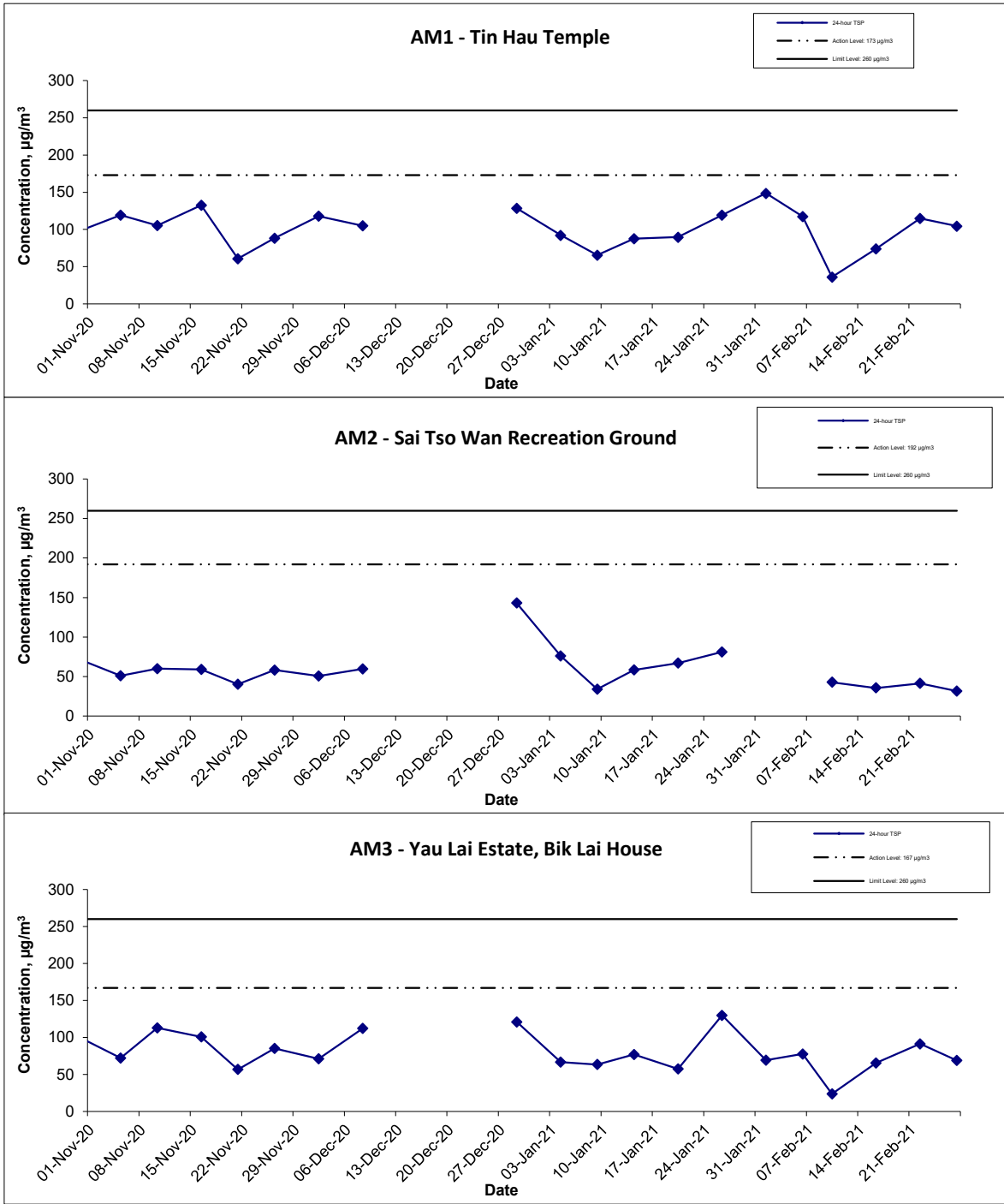
N/A: The HVS was broken-down during the first two week of February 2021.


### Location AM3 - Yau Lai Estate, Bik Lai House

Start Date	Weather	Air	Atmospheric	Filter Weight (g)		Particulate	Elapse Time		Sampling	Flow Rate (m <sup>3</sup> /min.)		Av. flow	Total vol.	Conc.
	Condition	Temp. (K)	Pressure, Pa (mmHg)	Initial	Final	Weight (g)	Initial	Final	Time(hrs.)	Initial	Final	(m <sup>3</sup> /min)	(m <sup>3</sup> )	(µg/m <sup>3</sup> )
1-Feb-21	Sunny	293.6	765.7	2.6706	2.7923	0.1217	3293.0	3317.0	24.0	1.22	1.22	1.22	1755.6	69.3
6-Feb-21	Cloudy	293.1	764.6	2.6432	2.7796	0.1364	3317.0	3341.0	24.0	1.22	1.22	1.22	1755.9	77.7
10-Feb-21	Sunny	290.0	761.6	2.6737	2.7154	0.0417	3341.0	3365.0	24.0	1.22	1.22	1.22	1762.2	23.7
16-Feb-21	Sunny	293.4	764.4	2.7407	2.8548	0.1141	3365.0	3389.0	24.0	1.21	1.21	1.21	1743.4	65.4
22-Feb-21	Sunny	294.6	762.6	2.6625	2.8213	0.1588	3389.0	3413.0	24.0	1.21	1.21	1.21	1737.5	91.4
27-Feb-21	Sunny	292.4	762.1	2.7565	2.8768	0.1203	3413.0	3437.0	24.0	1.21	1.21	1.21	1743.8	69.0
													Min	23.7
													Max	91.4
													Average	66.1

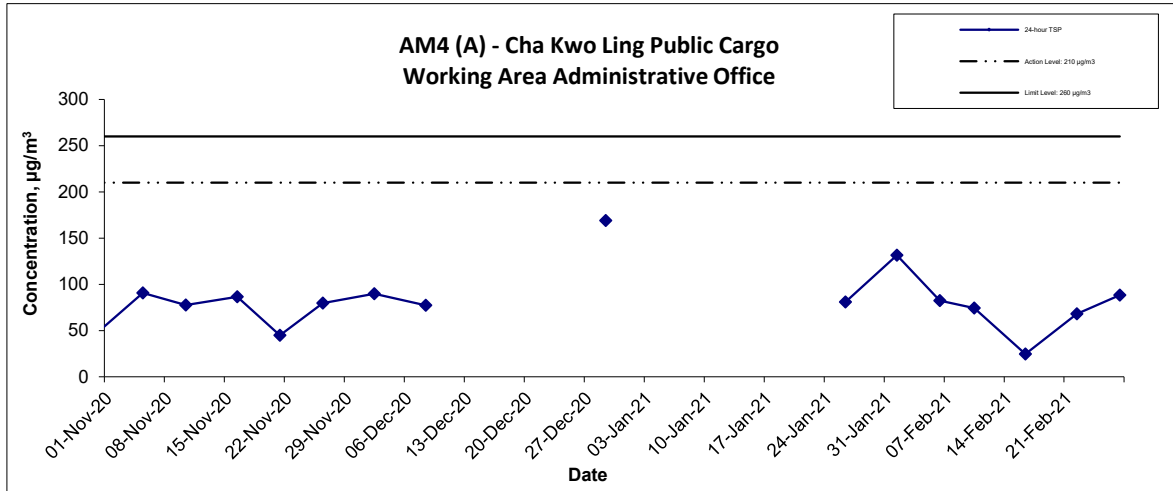
### Location AM4(A) - Cha Kwo Ling Public Cargo Working Area Administrative Office

Start Date	Weather	Air	Atmospheric	Filter Weight (g)		Particulate	Elapse Time		Sampling	Flow Rate (m <sup>3</sup> /min.)		Av. flow	Total vol.	Conc.
	Condition	Temp. (K)	Pressure, Pa (mmHg)	Initial	Final	Weight (g)	Initial	Final	Time(hrs.)	Initial	Final	(m <sup>3</sup> /min)	(m <sup>3</sup> )	(µg/m <sup>3</sup> )
1-Feb-21	Sunny	293.6	765.7	2.4415	2.6728	0.2313	14058.38	14082.4	24.0	1.22	1.22	1.22	1757.5	131.6
6-Feb-21	Cloudy	293.1	764.6	2.6757	2.8205	0.1448	14082.38	14106.4	24.0	1.22	1.22	1.22	1757.8	82.4
10-Feb-21	Sunny	290.0	761.6	2.6677	2.7987	0.1310	14106.38	14130.4	24.0	1.23	1.22	1.22	1763.4	74.3
16-Feb-21	Sunny	293.4	764.4	2.6693	2.7123	0.0430	14130.38	14154.4	24.0	1.21	1.21	1.21	1746.7	24.6
22-Feb-21	Sunny	294.6	762.6	2.6783	2.7970	0.1187	14154.38	14178.4	24.0	1.21	1.21	1.21	1741.4	68.2
27-Feb-21	Sunny	292.4	762.1	2.7746	2.9291	0.1545	14178.38	14202.4	24.0	1.21	1.21	1.21	1747.1	88.4
													Min	24.6
													Max	131.6
													Average	78.2



Contract No. ED/2018/04 Trunk Road T2 and Infrastructure Works for Developments at the Former South Apron  Graphical Presentation of 24-hour TSP Monitoring Results	Scale	Project No.	
	N.T.S	MA20003	
	Date	Appendix	
	Feb-21	F	

**24-hr TSP Concentration Levels**



**Notes:**

- 1) The major activitie(s) being carried out on site during the reporting period is/are presented in Section 1.10
- 2) The weather conditions during the reporting month are presented in Appendix C.
- 3) Other factors which might affect the monitoring results are presented in Section 2.17.
- 4) As notice by Engineer that no construction activity was carried out at the Portion T1, monitoring between 10 Dec 2020 to 23 Dec 2020 was then suspended.
- 5) Due to the COVID-19 pandemic, the TKOLTT site was entirely closed starting from 4 to 25 January 2021, thus, monitoring station AM4(A) was inaccessible and the 24-hour TSP monitoring at such station was temporary suspended during the aforementioned period.
- 6) The HVS at AM2 was broken-down during the first week of February 2021.

Contract No. ED/2018/04 Trunk Road T2 and Infrastructure Works for Developments at the Former South Apron  Graphical Presentation of 24-hour TSP Monitoring Results	Scale	Project No.	<b>CINOTECH</b>
	N.T.S	MA20003	
	Date	Appendix	
	Feb-21	F	