

Appendix F - 24-hour TSP Monitoring Results

Location AM1 - Tin Hau Temple

Start Date	Weather	Filter Weight (g)		Particulate	Elapse Time		Sampling	Flow Rate (m ³ /min.)		Av. flow	Total vol	Conc.
	Condition	Initial	Final	Weight (g)	Initial	Final	Time(hrs.)	Initial	Final	(m ³ /min)	(m ³)	(µg/m ³)
4-Jun-22	Cloudy	3.2930	3.4605	0.1675	10097.5	10121.5	24.0	1.20	1.20	1.20	1729.0	96.9
9-Jun-22	Cloudy	3.3358	3.4118	0.0760	10121.5	10145.5	24.0	1.21	1.21	1.21	1738.0	43.7
14-Jun-22	Fine	3.3282	3.4204	0.0922	10145.5	10169.5	24.0	1.22	1.22	1.22	1755.2	52.5
20-Jun-22	Sunny	3.3768	3.4840	0.1072	10169.5	10193.5	24.0	1.21	1.21	1.21	1747.2	61.4
25-Jun-22	Sunny	2.6688	2.7604	0.0916	10193.5	10217.5	24.0	1.21	1.21	1.21	1748.4	52.4
29-Jun-22	Fine	3.3617	3.4787	0.1170	10217.5	10241.5	24.0	1.21	1.22	1.21	1746.4	67.0
											Min	43.7
											Max	96.9
											Average	62.3

Location AM2 - Sai Tso Wan Recreation Ground

Start Date	Weather	Filter Weight (g)		Particulate	Elapse Time		Sampling	Flow Rate (m ³ /min.)		Av. flow	Total vol.	Conc.
	Condition	Initial	Final	Weight (g)	Initial	Final	Time(hrs.)	Initial	Final	(m ³ /min)	(m ³)	(µg/m ³)
4-Jun-22	Cloudy	3.3385	3.4009	0.0624	31218.4	31242.4	24.0	1.20	1.20	1.20	1728.6	36.1
9-Jun-22	Cloudy	3.3281	3.3667	0.0386	31242.4	31266.4	24.0	1.21	1.21	1.21	1737.9	22.2
14-Jun-22	Cloudy	3.2691	3.3047	0.0356	31266.4	31290.4	24.0	1.22	1.22	1.22	1754.6	20.3
20-Jun-22	Fine	3.3087	3.3578	0.0491	31290.4	31314.8	24.4	1.21	1.21	1.21	1772.3	27.7
25-Jun-22	Sunny	3.3181	3.3433	0.0252	31314.8	31338.8	24.0	1.21	1.21	1.21	1747.3	14.4
29-Jun-22	Cloudy	3.3142	3.3470	0.0328	31338.8	31362.8	24.0	1.21	1.21	1.21	1745.2	18.8
											Min	14.4
											Max	36.1
											Average	23.3

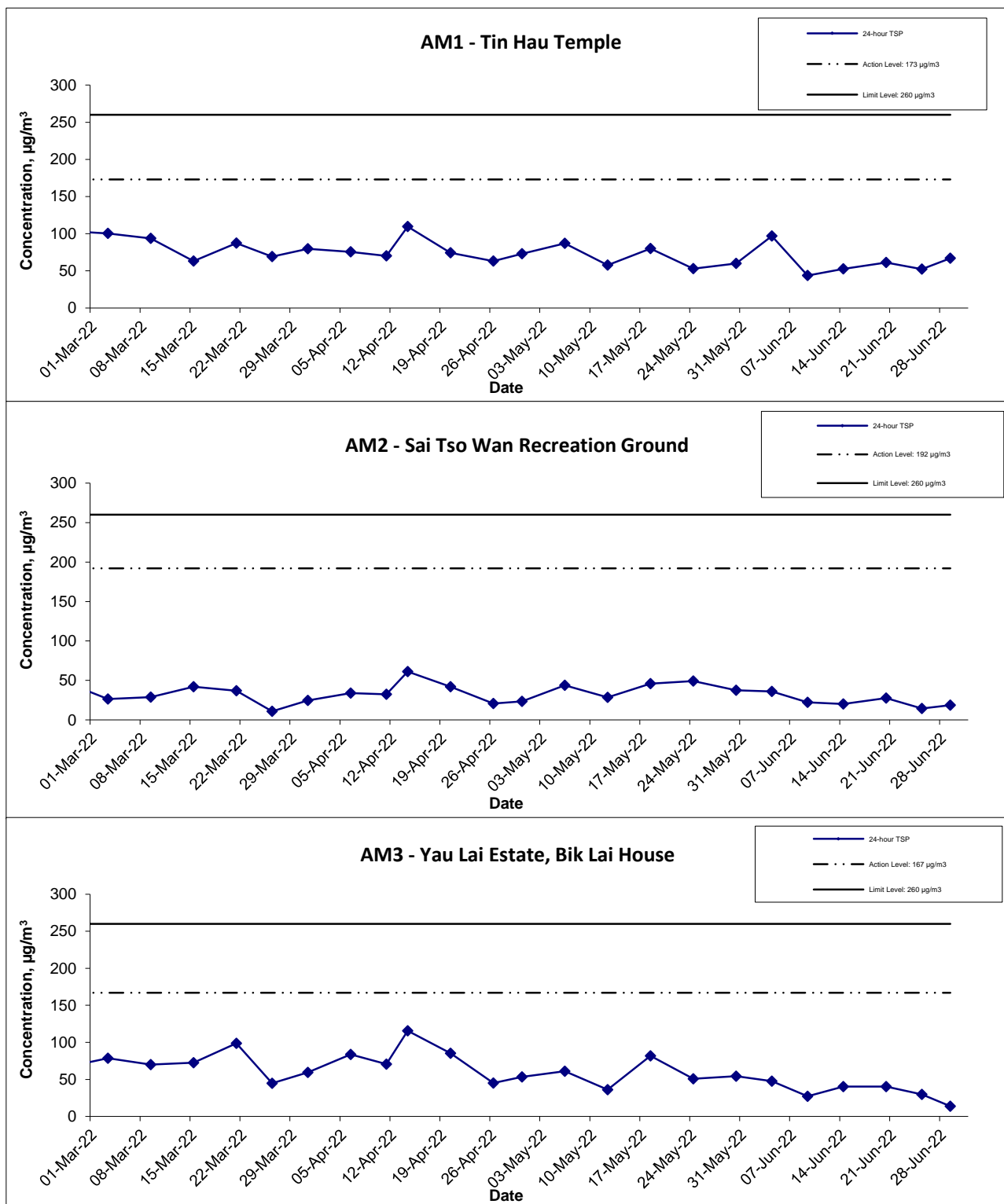
Location AM3 - Yau Lai Estate, Bik Lai House

Start Date	Weather	Filter Weight (g)		Particulate	Elapse Time		Sampling	Flow Rate (m ³ /min.)		Av. flow	Total vol.	Conc.
	Condition	Initial	Final	Weight (g)	Initial	Final	Time(hrs.)	Initial	Final	(m ³ /min)	(m ³)	(µg/m ³)
4-Jun-22	Cloudy	3.2945	3.3769	0.0824	5585.5	5609.5	24.0	1.20	1.20	1.20	1729.5	47.6
9-Jun-22	Cloudy	3.3369	3.3842	0.0473	5609.5	5633.5	24.0	1.21	1.21	1.21	1738.7	27.2
14-Jun-22	Fine	3.3567	3.4274	0.0707	5633.5	5657.5	24.0	1.22	1.22	1.22	1754.8	40.3
20-Jun-22	Sunny	3.3084	3.3788	0.0704	5657.5	5681.5	24.0	1.21	1.21	1.21	1746.5	40.3
25-Jun-22	Sunny	3.3823	3.4341	0.0518	5681.5	5705.5	24.0	1.21	1.21	1.21	1747.8	29.6
29-Jun-22	Fine	3.3291	3.3533	0.0242	5705.5	5729.5	24.0	1.21	1.21	1.21	1745.7	13.9
											Min	13.9
											Max	47.6
											Average	33.6

Location AM4(A) - Cha Kwo Ling Public Cargo Working Area Administrative Office

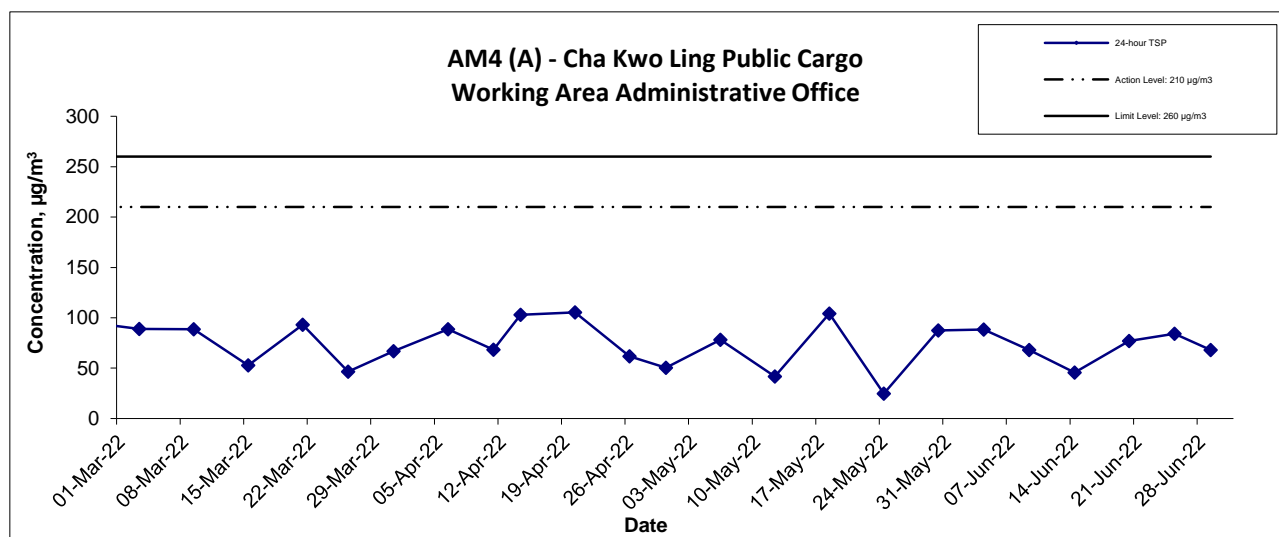
Start Date	Weather	Filter Weight (g)		Particulate	Elapse Time		Sampling	Flow Rate (m ³ /min.)		Av. flow	Total vol.	Conc.
	Condition	Initial	Final	Weight (g)	Initial	Final	Time(hrs.)	Initial	Final	(m ³ /min)	(m ³)	(µg/m ³)
4-Jun-22	Cloudy	3.3042	3.4574	0.1532	16527.7	16551.7	24.0	1.21	1.21	1.21	1736.3	88.2
9-Jun-22	Cloudy	3.3608	3.4794	0.1186	16551.7	16575.7	24.0	1.21	1.21	1.21	1745.0	68.0
14-Jun-22	Cloudy	3.3528	3.4323	0.0796	16599.7	16623.7	24.0	1.21	1.21	1.21	1744.9	45.6
20-Jun-22	Cloudy	3.3277	3.4613	0.1336	16647.7	16671.7	24.0	1.21	1.21	1.21	1737.9	76.9
25-Jun-22	Fine	3.3808	3.5269	0.1461	16671.7	16695.7	24.0	1.21	1.21	1.21	1738.3	84.0
29-Jun-22	Fine	3.2802	3.3982	0.1180	16695.7	16719.7	24.0	1.20	1.21	1.21	1736.3	67.9
											Min	45.6
											Max	88.2
											Average	71.8

*In June 2022, the 24 TSP Monitoring at AM4(A) is suspended and under application for relocation. Once the proposal for relocation is approved, the monitoring at AM4(A) will be conducted at AM4(B). For the time being, as the station CKL2 for the 24 hr TSP monitoring, carried out under EM&A works for Trunk Road T2 Project (EP-451/2013), is located in close proximity to AM4(A); the results from CKL2 are adopted as reference for the 24 TSP monitoring at AM4(A), which has similar environment when compared with that for CKL2.



Contract No. ED/2018/04 Trunk Road T2 and Infrastructure Works for Developments at the Former South Apron Graphical Presentation of 24-hour TSP Monitoring Results	Scale N.T.S	Project No. MA20003	CINOTECH
	Date Jun-22	Appendix F	

24-hr TSP Concentration Levels



Notes:

- 1) The major activitie(s) being carried out on site during the reporting period is/are presented in Section 1.10
- 2) The weather conditions during the reporting month are presented in Appendix C.
- 3) Other factors which might affect the monitoring results are presented in Section 2.17.
- 4) *In June 2022, the 24 TSP Monitoring at AM4(A) is suspended and under application for relocation. Once the proposal for relocation is approved, the monitoring at AM4(A) will be conducted at AM4(B). For the time being, as the station CKL2 for the 24 hr TSP monitoring, carried out under EM&A works for Trunk Road T2 Project (EP-451/2013), is located in close proximity to AM4(A); the results from CKL2 are adopted as reference for the 24 TSP monitoring at AM4(A), which has similar environment when compared with that for CKL2.

Contract No. ED/2018/04 Trunk Road T2 and Infrastructure Works for Developments at the Former South Apron Graphical Presentation of 24-hour TSP Monitoring Results	Scale N.T.S	Project No. MA20003	CINOTECH
	Date Jun-22	Appendix F	