

**24-hour TSP Monitoring Result for
Kai Tak Development - Stage 3 Infrastructure Works for
Developments at the Southern Part of the Former Runway**

KTD1a - Centre of Excellence in Paediatrics (Children's Hospital)

Start Date	Weather Condition	Air Temperature (K)	Atmospheric Pressure, Pa (mmHg)	Filter Weight (g)		Particulate weight (g)	Sampling Time(hrs)	Flow Rate (m ³ /min.)		Average flow (m ³ /min.)	Total volume (m ³)	Conc. (ug/m ³)	Action Level (ug/m ³)	Limit Level (ug/m ³)	
				Initial	Final			Initial	Final						
1-Feb-18	Fine	283.2	766.7	2.5866	2.8186	0.2320	24	1.56	1.51	1.53	2204.1	105	177	260	
6-Feb-18	Fine	284.1	767.8	2.6517	2.9448	0.2931	24	1.55	1.51	1.53	2203.1	133			
10-Feb-18	Fine	291.0	763.0	2.6160	2.8652	0.2492	24	1.46	1.44	1.45	2091.5	119			
15-Feb-18	Cloudy	292.8	762.1	2.5707	2.7763	0.2056	24	1.52	1.51	1.51	2180.8	94			
21-Feb-18	Fine	291.2	761.2	2.6542	2.9505	0.2963	24	1.53	1.51	1.52	2183.3	136			
26-Feb-18	Cloudy	290.3	764.9	2.6279	2.7505	0.1226	24	1.47	1.44	1.45	2094.2	59			
												Min	59		
												Max	136		
												Average	108		

KTD2a - G/C Zone next to Kwun Tong Bypass (Future Hospital at Site 3C1)

Start Date	Weather Condition	Air Temperature (K)	Atmospheric Pressure, Pa (mmHg)	Filter Weight (g)		Particulate weight (g)	Sampling Time(hrs)	Flow Rate (m ³ /min.)		Average flow (m ³ /min.)	Total volume (m ³)	Conc. (ug/m ³)	Action Level (ug/m ³)	Limit Level (ug/m ³)	
				Initial	Final			Initial	Final						
1-Feb-18	Fine	283.2	766.7	2.5676	2.6554	0.0878	24	1.55	1.49	1.52	2190.8	40	157	260	
6-Feb-18	Fine	284.1	767.8	2.6333	2.7810	0.1477	24	1.55	1.49	1.52	2189.7	67			
10-Feb-18	Fine	291.0	763.0	2.6391	2.7256	0.0865	24	1.44	1.42	1.43	2063.6	42			
15-Feb-18	Cloudy	292.8	762.1	2.6601	2.7555	0.0954	24	1.51	1.49	1.50	2165.4	44			
21-Feb-18	Fine	291.2	761.2	2.6495	2.7747	0.1252	24	1.52	1.49	1.51	2168.1	58			
26-Feb-18	Cloudy	290.3	764.9	2.6110	2.7130	0.1020	24	1.52	1.49	1.51	2173.2	47			
												Min	40		
												Max	67		
												Average	50		

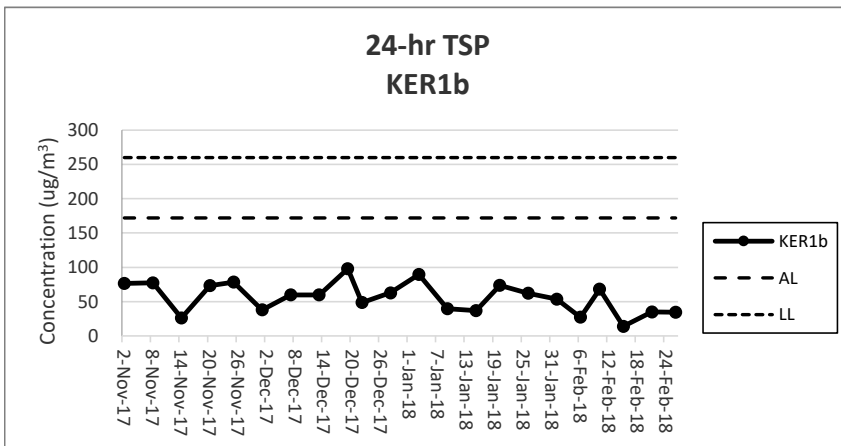
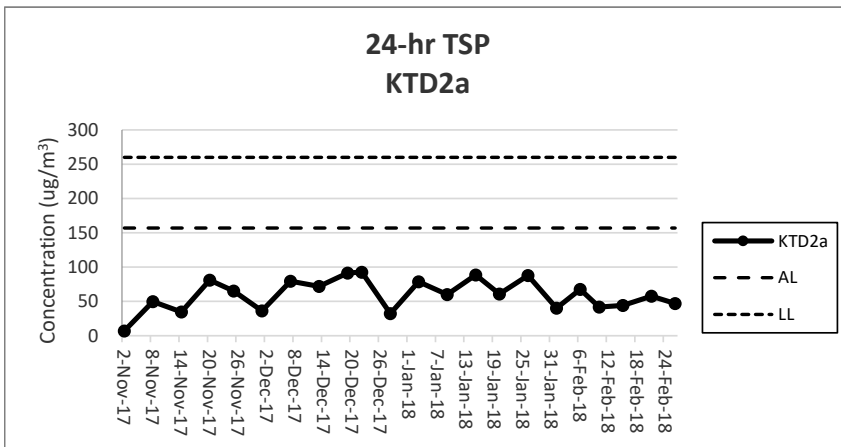
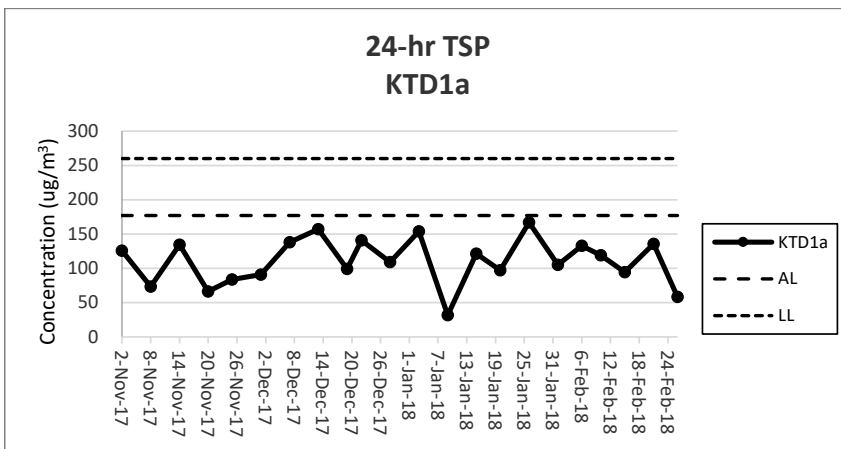
KER1b - Site Boundary at Cheung Yip Street

Start Date	Weather Condition	Air Temperature (K)	Atmospheric Pressure, Pa (mmHg)	Filter Weight (g)		Particulate weight (g)	Sampling Time(hrs)	Flow Rate (m ³ /min.)		Average flow (m ³ /min.)	Total volume (m ³)	Conc. (ug/m ³)	Action Level (ug/m ³)	Limit Level (ug/m ³)	
				Initial	Final			Initial	Final						
1-Feb-18	Fine	283.2	766.7	2.5751	2.6715	0.0964	24	1.27	1.23	1.25	1797.0	54	172	260	
6-Feb-18	Fine	284.1	767.8	2.6329	2.6817	0.0488	24	1.27	1.23	1.25	1796.1	27			
10-Feb-18	Fine	291.0	763.0	2.6151	2.7424	0.1273	24	1.31	1.29	1.30	1869.2	68			
15-Feb-18	Cloudy	292.8	762.1	2.5944	2.6203	0.0259	24	1.30	1.29	1.30	1865.0	14			
21-Feb-18	Fine	291.2	761.2	2.6340	2.6962	0.0622	24	1.24	1.23	1.23	1777.9	35			
26-Feb-18	Cloudy	290.3	764.9	2.5959	2.6574	0.0615	24	1.25	1.23	1.24	1782.2	35			
												Min	14		
												Max	68		
												Average	39		

Note:

Underline: Exceedance of Action Level

Underline and Bold: Exceedance of Limit Level



Note:

- 1) The major activities being carried out on site during the reporting period can be referred to Section 1.3.2.
- 2) The weather conditions during the reporting period can be referred to Appendix K.
- 3) Any other factors which might affect the monitoring results can be referred to Section 2.6.4.
- 4) QA/QC results, calibration results and detection limits can be referred to Appendix D.