

**24-hour TSP Monitoring Result for
Kai Tak Development - Stage 3 Infrastructure Works for
Developments at the Southern Part of the Former Runway**

KTD1a - Centre of Excellence in Paediatrics (Children's Hospital)

Start Date	Weather Condition	Air Temperature (K)	Atmospheric Pressure, Pa (mmHg)	Filter Weight (g)		Particulate weight (g)	Sampling Time(hrs)	Flow Rate (m ³ /min.)		Average flow (m ³ /min.)	Total volume (m ³)	Conc. (ug/m ³)	Action Level (ug/m ³)	Limit Level (ug/m ³)	
				Initial	Final			Initial	Final						
6-Jul-18	Fine	303.1	752.0	2.7025	2.7442	0.0417	24	1.23	1.25	1.24	1783.5	23	177	260	
12-Jul-18	Fine	303.0	752.5	2.6940	2.7583	0.0643	24	1.29	1.31	1.30	1876.4	34			
18-Jul-18	Cloudy	300.7	753.0	2.6973	2.7330	0.0357	24	1.30	1.31	1.31	1880.6	19			
24-Jul-18	Fine	302.8	752.8	2.6802	2.7670	0.0868	24	1.29	1.31	1.30	1876.9	46			
30-Jul-18	Fine	303.2	754.2	2.6650	2.7082	0.0432	24	1.29	1.31	1.30	1877.2	23			
												Min	19		
												Max	46		
												Average	29		

KTD2a - G/IC Zone next to Kwun Tong Bypass (Future Hospital at Site 3C1)

Start Date	Weather Condition	Air Temperature (K)	Atmospheric Pressure, Pa (mmHg)	Filter Weight (g)		Particulate weight (g)	Sampling Time(hrs)	Flow Rate (m ³ /min.)		Average flow (m ³ /min.)	Total volume (m ³)	Conc. (ug/m ³)	Action Level (ug/m ³)	Limit Level (ug/m ³)	
				Initial	Final			Initial	Final						
6-Jul-18	Fine	303.1	752.0	2.7116	2.7807	0.0691	24	1.54	1.57	1.56	2240.0	31	157	260	
12-Jul-18	Fine	303.0	752.5	2.7075	2.7742	0.0667	24	1.33	1.35	1.34	1925.6	35			
18-Jul-18	Cloudy	300.7	753.0	2.6937	2.7382	0.0445	24	1.33	1.35	1.34	1930.4	23			
24-Jul-18	Fine	302.8	752.8	2.6920	2.7707	0.0787	24	1.25	1.27	1.26	1821.2	43			
30-Jul-18	Fine	303.2	754.2	2.6724	2.7627	0.0903	24	1.55	1.57	1.56	2241.7	40			
												Min	23		
												Max	43		
												Average	34		

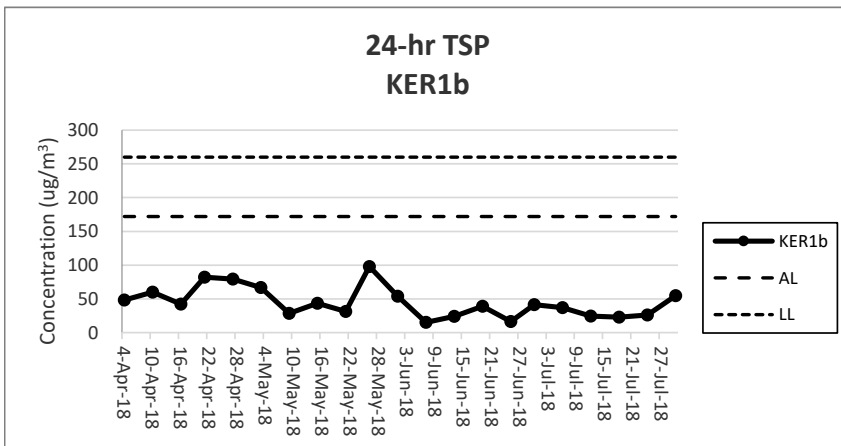
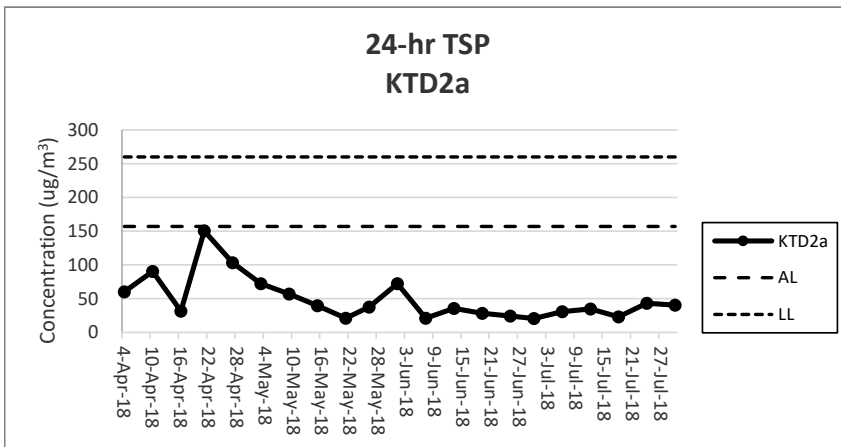
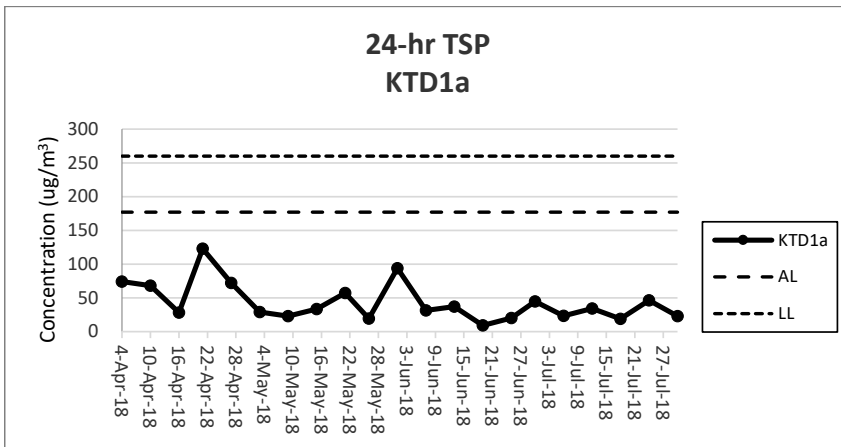
KER1b - Site Boundary at Cheung Yip Street

Start Date	Weather Condition	Air Temperature (K)	Atmospheric Pressure, Pa (mmHg)	Filter Weight (g)		Particulate weight (g)	Sampling Time(hrs)	Flow Rate (m ³ /min.)		Average flow (m ³ /min.)	Total volume (m ³)	Conc. (ug/m ³)	Action Level (ug/m ³)	Limit Level (ug/m ³)	
				Initial	Final			Initial	Final						
6-Jul-18	Fine	303.1	752.0	2.7253	2.7801	0.0548	24	1.02	1.04	1.03	1484.9	37	172	260	
12-Jul-18	Fine	303.0	752.5	2.6926	2.7355	0.0429	24	1.21	1.23	1.22	1750.6	25			
18-Jul-18	Cloudy	300.7	753.0	2.6937	2.7382	0.0445	24	1.33	1.35	1.34	1930.4	23			
24-Jul-18	Fine	302.8	752.8	2.6754	2.7214	0.0460	24	1.21	1.23	1.22	1751.1	26			
30-Jul-18	Fine	303.2	754.2	2.6797	2.7758	0.0961	24	1.21	1.23	1.22	1751.4	55			
												Min	23		
												Max	55		
												Average	33		

Note:

Underline: Exceedance of Action Level

Underline and Bold: Exceedance of Limit Level



Note:

- 1) The major activities being carried out on site during the reporting period can be referred to Section 1.3.2.
- 2) The weather conditions during the reporting period can be referred to Appendix K.
- 3) Any other factors which might affect the monitoring results can be referred to Section 2.6.4.
- 4) QA/QC results, calibration results and detection limits can be referred to Appendix D.